

Central Methodist



FOOTBALL 1981

FROM THE PRESIDENT OF THE COLLEGE

Undergraduate athletics are definitely a part of the total academic experience at Central Methodist College. It is in this spirit that we begin our 1981 football season under the leadership of Coaches Don Shinnick and Ted Kozinski. Through their past experiences these two men have exemplified what it means to emphasize the values of athletics which support strength of character and dedication of purpose. I applaud the noticeable emphasis by these coaches on the importance of the individuals; their studies and their Christian ethics along with the desire to perform on the football field. It is our intention to encourage this emphasis in all our athletic programs so that both parents and players can be proud of having participated in athletics at Central Methodist College.

I personally want to thank those of you who are supporting the teams through your attendance at the games. Central Methodist College is putting her best foot forward to present a wholesome and exciting afternoon's entertainment through the combination of our bands, cheerleaders, teams and other student performing groups representing our fine student body.



DR. JOE A. HOWELL, PRESIDENT



DR. JAMES M. LUETJEN

AND THE DIRECTOR OF ATHLETICS:

We are beginning what promises to be another exciting year of athletic competition for Central Methodist College athletes. The athletic program at Central Methodist offers nine intercollegiate sports for men and five intercollegiate sports for women. The number of participants on our intercollegiate teams during the 1981-1982 season will again reach a record level. Last season, the men's basketball team won the Heart of America Athletic Conference Championship and the women's softball team won the District 16 Championship and also participated in the NAIA Championship in Conroe, Texas. In addition, the women's volleyball team won the Heart of America Athletic Championship and placed second in District 16 play. Also last spring, Danny Widhalm qualified for the National Track Meet in Texas by high jumping seven feet in sectional competition.

The many young men and women who participate on intercollegiate teams spend many hours practicing to improve their skills to a level that is necessary to be a member of an athletic team. On behalf of these young people, I want to thank you for your support that you give to each of our athletic teams throughout the school year.

CENTRAL METHODIST COLLEGE

President of College Dr. Joe A. Howell
Dean of College Dr. Ron Bell
Athletic Faculty Representative Robert Shields
Location Fayette, Missouri
Street Address N. Church Street
Enrollment 700
Phone Number 816-248-3391
Founded 1854
Stadium Davis Field
Colors Green & Black
Nickname Eagles
Conference Heart of America
National Membership NAIA District 16

ATHLETIC STAFF

Dr. James M. Luetjen Director of Athletics
Don Shinnick Head Football Coach
..... Head Baseball Coach
Ted Kozinski Asst. Football Coach
Ken Ash Head Basketball Coach
..... Golf Coach
Phyllis Richardson Women's Volleyball Coach
..... Women's Tennis Coach
Keri Burres Track Coach
..... Cross-Country Coach
Bill Holmes Soccer Coach
Tony Boes Men's Tennis Coach
Julie Brown Women's Basketball Coach
Ron Dempsey Women's Softball Coach
Matt Zeni Sports Information Director

Compliments
of
FREDDI-MIX



National Association of Intercollegiate Athletics

The National Association of Intercollegiate Athletics (NAIA) is a completely autonomous association, currently administering programs of intercollegiate athletics in 515 fully accredited four-year colleges and universities. The fundamental tenet of the NAIA is that intercollegiate athletics is an integral part of the total educational program of the institution. This belief is strongly reflected in the governing documents, activities and organizational structure of the Association.

PURPOSE AND HISTORY

Established in 1940 as the National Association of Intercollegiate Basketball, the NAIA (the name change coming in 1952) emanated from a "National Small College Basketball Tournament" inaugurated in 1937 in Kansas City Missouri. The conversion of the NAIB to the NAIA in 1952 included the expansion of the program to include national championships in golf, outdoor track and field and tennis. Football (two divisions), cross country, baseball and swimming were added to the ledger in 1956 and wrestling (1958), soccer (1959), bowling (1962-1978), gymnastics (1964), indoor track and field (1966), ice hockey (1968) and volleyball (1969) are the most recent additions. The initial purpose of the NAIA — to provide national championship opportunities to colleges and universities competing below the so-called "major" level — has indeed been well served.

NAIA organizes and administers all areas of intercollegiate athletics at the national level, including rules and standards, and district and national sports competition.

The NAIA clearly outlines its own responsibilities and those of its members: a sound athletics program, administered and controlled by those responsible for the administration of the college. This means direct supervision in the matter of caliber of competition, financing of the athletics program, and taking steps to assure that financial assistance is made available only through the institution and under the same general policies as aid to all students. In short, the basic premise is that the athletics program must be a basic component of the overall general educational process within the institution, and not an entity apart.

The NAIA encourages a broad program of athletic pursuits in its member institutions, and making the program available to the greatest possible number of students. The national organization aims at uniformity and equity in policies and practices through its district and national tournaments and meetings.

Eligibility rules in the NAIA govern all play in all sports recognized by the Association, not just post-season tournaments, and must be adhered to by all members, including members holding dual affiliation with other associations.

HOW ADMINISTERED

The principal governance body of the NAIA is the Ex-

ecutive Committee, composed of 11 persons elected by the membership, and the Executive Director (ex-officio). This committee is responsible for establishing policies and determining the overall direction of the Association.

The NAIA is organized into 31 geographic districts spread over the 50 states and including one Canadian member. Each district is governed by a District Executive Committee, the chief officer of which is the District Chairman. Representation on the District Executive Committee includes one committeeman for each three active member schools, or major fraction thereof, in the district. The District Chairman is elected for a three-year term by a vote of the active membership within the District.

The District is the basic unit of the NAIA. The District Executive Committee establishes a program of District championship events in the various sports. Individual and team District champions are certified to compete in Area and / or National championship competitions by virtue of winning the District event or by meeting qualifying standards established within the particular sport.

Women's Division — Effective August, 1980, the NAIA instituted a championship event program for women through its newly-established Women's Division. Nine championships for women were offered during the 1980-81 sports season. The NAIA decision to offer competitive opportunities and championship events for women followed two years of consideration by the membership and proposals developed by a committee on women's athletics. The general membership passed the proposal by mail vote in May, 1980.

MEMBERSHIP ELIGIBILITY

Any four-year, degree-granting college or university in the United States and Canada, fully-accredited by the member accrediting agencies or commissions of the Council on Postsecondary Accreditation, may become an active member. Institutions may become members of the NAIA at any time but schools sending in membership dues after the deadline of October 15 will not be considered as active members and will not be eligible to participate in District, Area and National events until the next eligibility reporting deadline following payment of dues. Those reporting deadlines are: October 15, February 1 and April 15.

OBLIGATION OF MEMBERSHIP

Member institutions must conduct their intercollegiate athletic programs to the standards of the regulatory Association in which they hold memberships, and the NAIA. They must pay the annual membership dues and be in support of the policies of the Association. Where institutional rules and standards are stricter than those of the regulatory group or the NAIA, those rules and standards of the institution are recognized and supported by the NAIA.



National Association of Intercollegiate Athletics

Dear Football Fans:

Your support of intercollegiate athletics, and other activities programs offered by your favorite college or university reflects your belief in the young men and women who are being educated on our great campuses for leadership in tomorrow's world. Your attendance here today has important meaning for both the institutions involved and the participants.

There is nothing quite like the pageantry and excitement of American college football. It is the strong feeling of the National Association of Intercollegiate Athletics that football and other sports are an integral aspect of the institution's total educational program. Over 70,000 student-athletes are annually involved in the varsity sports programs in the NAIA's more than 500 member institutions. We are very pleased that the Fall football program provides the vehicle for alumni and community involvement on campus, as well as a robust and desirable activity for the students.

The NAIA strives for a well balanced and comprehensive program of activities -- one that meets the needs and interests of the total student population.

The NAIA conducts 15 national championships in 14 different men's sports and nine national championships in the women's division, beginning its second year of conducting such a national championship event program.

The 1981 football season should be just as exciting as 1980 when Elon College NC and Pacific Lutheran WA won national championships in Division I and II, respectively.



Carroll Land

I echo the sentiments of our entire membership when I say thanks to you for your loyal support in helping make today's football game an outstanding athletic competition in the best tradition of American higher education. Return often. Welcome to today's game and congratulations on being a participant in an event that is associated with the best features of American life.

Carroll B. Land
Point Loma College
President, 1981 - 82
NAIA

THE NAIA CHAMPIONSHIP FOOTBALL PLAYOFF SYSTEM

DIVISIONS AND AREAS

Unlike basketball, where NAIA institutions compete in districts, NAIA football-playing members are classified according to Divisions — I or II. When the NAIA divided into divisions in 1970 member institutions at the time were given an opportunity to declare in which division they wished to compete. The NAIA Football Coaches Association Review Board has had the authority to rule on changes within divisions and an institution is required to spend at least two seasons in a given division once it is placed there. Within each division member institutions are arranged according to geographic areas. There are four such areas in each division.

RATERS AND RATINGS

Teams selected for participation in the playoffs are determined by weekly ratings of teams during a specified rating period through a season. Selected members of the NAIA Football Coaches Association submit a weekly rating of teams during this period which determines the participants in the post-season playoffs. Each division (I and II) is allocated 16 raters — four raters for each geographical area.

SELECTION OF TEAMS

- Institutions must declare their intent to participate in the NAIA championship program by September 15.
- Teams must be ranked in the top 12 in the final regular-season weekly rating in each division to be considered for the playoffs.

- The top-ranked team from each of the four geographical areas (in each division) within the top 12 in the final regular-season rating is automatically selected for the playoffs.

- The next four highest-ranked teams, regardless of geographic area, and not already selected, complete the eight-team field.

- No more than two teams from the same conference (within the same division) may be selected for the playoffs.

- Teams may be paired according to geographic proximity to each other for the first round (quarterfinals) and members of the same conference would play each other no later than the second round (semifinals).

- Teams with four or more non-winning games may not be selected for participation in the playoffs.

1981 PLAYOFF DATES

DIVISION II

Quarterfinals — Saturday, November 21
Semifinals — Saturday, December 5
Championship — Saturday, December 12

DIVISION I

Quarterfinals — Saturday, December 5
Semifinals — Saturday, December 12
Championship — Saturday, December 19

Clatworthy's Ready Wear

248-2427

Fayette, Missouri

Saga

THE
EDUCATIONAL
DIVISION

EIGHT LANES BOWLING

Finest AMF Equipment

Open Bowling Friday and Saturday Nights
7:30 to 11:00 P.M.

ASK ABOUT CMC STUDENT DISCOUNT

We Furnish Everything



AVAILABLE WEDNESDAY EVENINGS FOR PARTIES
FAYETTE BOWLING LANES

Four Blocks
From Campus
South Main St., Fayette

Johnny Tippet
& Wayne Carr
Tel. 248-3330

Peacock Beauty Shop



 REDKEN®

Co-ed Hair Cuts

Sharon Young
Kay Harris

Jane Lee
Donna McKee

106 N. Church
Fayette, Missouri
248-3142

For the Best Donuts
On Earth Try . . .

PARADISE DONUTS

Fayette or Boonville

Compliments of KLINE REAL ESTATE

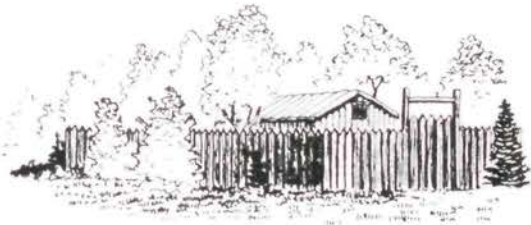


MORRISON & CHURCH STREETS
FAYETTE, MISSOURI 65248
PHONE: 816 - 248-3354

400 EAST SPRING STREET
BOONVILLE, MISSOURI 65233
PHONE: 816 - 882-7476



OFFICES IN BOONVILLE AND FAYETTE MISSOURI
HOME OFFICE — BOONVILLE, MISSOURI



HISTORIC SITE - OF SALT LICK
USED BY DANIEL BOONE AND
EARLY PIONEER SETTLERS

COMMERCIAL TRUST COMPANY

FAYETTE, MISSOURI 65248

TELEPHONE (816) 248-2222



L.W. JACOBS, JR., PRESIDENT CMC '19
W.J. TURNAGE, VICE PRESIDENT CMC '39
L.W. JACOBS III, VICE PRESIDENT CMC '52
MARK HARBISON, SECRETARY CMC '76

Each depositor insured to \$100,000



MEET THE HEAD COACH:

Don Shinnick, a native of Kansas City, Missouri, is entering his third season at Central Methodist College. A graduate of San Pedro High School in California, Shinnick was a standout with UCLA from 1954-56. After an illustrious college career, Shinnick played linebacker for the Baltimore Colts of the National Football League. His thirteen year career included numerous achievements and awards, including All-Pro honors. In addition, Shinnick has served on the coaching staff of the St. Louis Cardinals, the Chicago Bears, and the Oakland Raiders.

Concerning this season, the 45-year old Shinnick feels the offensive unit of the Eagles is solid. "We'll have the potential of scoring more points this season than in the past." With many underclassmen returning from last season paired with approximately fifty freshmen, this year's team will be a young squad looking to improve and build a winning tradition for the future.

An active member of the Fellowship for Christian Athletes, Coach Shinnick is married and the father of five sons.



DON SHINNICK

AND THE HEAD ASSISTANT COACH:

Ted Kozinski is beginning his first season with the Eagles. Kozinski's chief responsibility will be defensive coordinator of the team and he will also serve as coach for the linebackers and the defensive line. Coach Kozinski has eight years of coaching experience in several high schools across the state including Columbia Hickman and Jefferson City. In addition, Kozinski has been the head football coach at Willow Springs (Mo.) High School for the past two years. Coach Kozinski is married and has four children. Two of his sons, Ted Jr. and Mark, are students at Central Methodist.



TED KOZINSKI

1981

CENTRAL METHODIST COLLEGE EAGLES FOOTBALL TEAM



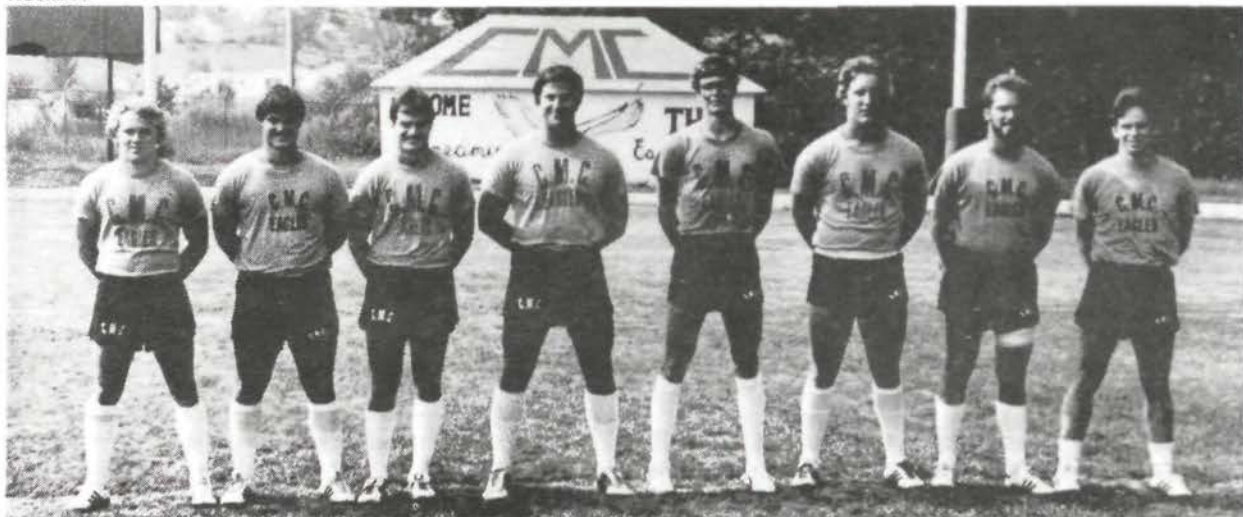
Row 1: Bobby Wallace, Martin Jasinski, Don Bockius, Maurice Haynes, Kevin Burton, Everet Preyer, Donnie Wilson, Alvin Hudson, Jeff Stack, Larry Clark, Tim Gambill, Dick Hutchison, Brad Mueller, David Ross, Mark Carrington, Kevin Austene, Chip Phillips, Danny Wilson, Barry Krause, Kevin Childress. **Row 2:** Stephen Conard, Oscar Caston, Courtney Jones, Bernard Kimple, David Matthews, Carl Harris, Mike Reinhart, Bob Jones, Jim Ross, Mike Banks, Steve Braning, Larry Layden Darryl Hill, Gerald Bowen, Mike Anderson, Jeff Lotz, Tony Livingston, Buzz Ferrell, Mark Baker, Brad Burks, Brian Fink. **Row 3:** Chris Hindle, Andy Jenkins, Wally Sims, Mark Truitt, Rick Pinkert, Vernon Straw, Clifford Bailey, Jerry Luna, Randy Susong, Dean Sturm, Chuck Thole, Glen Gunter, Mark Loge, EJ Johnson, Ted Shemwell, Keith Steward, Steve Silvey, Homer Mallory, Jamie Hazlett, Tom Cook, Jay Johnson, Andy Headrick. **Row 4:** Craig Brown, Mark Kozinski, Kirk Imhoff, Billy Joe White, Donald Kern, Jay Vaughan, Mike Selby, Wilburt Peebles, Dave Conrady, Mark Nichols, Lynn Scott, Scott Sisson, Jeff Blair, Tim Todd, Tom Whiston, Darryl Levy, Raymond Findley, Roger Pritchett, Tony Whiston, Herb Standeven, Kevin Roberts, Danny Kesselring. **Row 5:** Laine Henkel, Chris Sturm, Rod Mathewson, Dave Smith, Tom Pondel.



COACHES: Ted Kozinski, Don Shinnick, Jeff Holloway, Tim Kistler, Steve Luetjen, Ron Dempsey



TEAM MANAGERS: Vince Ketterer (team trainer), Greg Doherty, Mitch Lotz, Jeff Huckaba



SENIORS: Jeff Lotz, Tim Gambill, David Ross, Kevin Roberts, Mark Nichols, Jim Ross, Mark Carrington, Tony Livingston

JUNIOR VARSITY 1981 FOOTBALL SCHEDULE

DATE	OPPONENT	TIME
September		
14	at Northeast Missouri State	3:30
21	University Missouri-Rolla	3:30
28	at Central Missouri State	7:30
October		
5	at University Missouri-Rolla	3:30
12	at Washington University	4:00
19	at Missouri Valley	7:30
November		
9	Missouri Valley	3:00



Mike Anderson



Kevin Austene

1981 CMC FOOTBALL PLAYERS



Michael Banks



Mark Baker



Ken Barton



Jeff Blair



Don Bockius



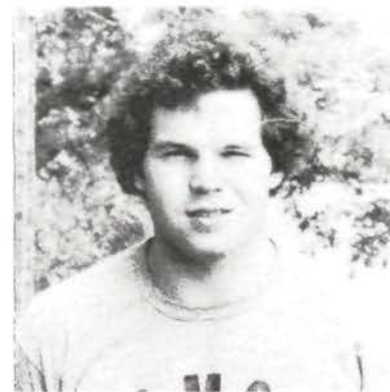
Gerald Bowen



Steve Braning



Craig Brown



Brad Burks



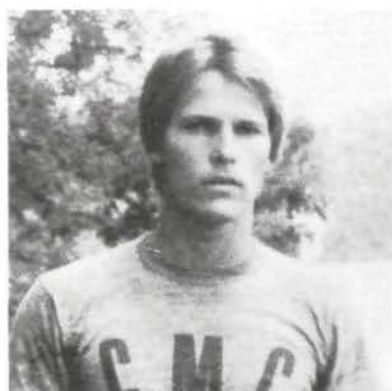
Kevin Burton



Mark Carrington



Oscar Caston



Kevin Childress



Larry Clark



Stephen Conard



David Conrady



Tom Cook



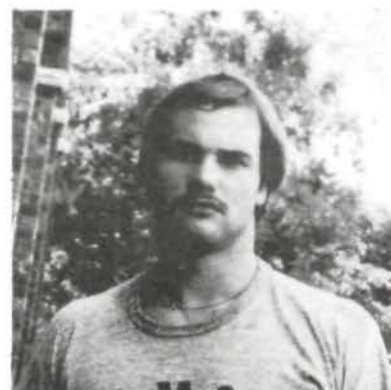
Buzz Ferrell



T J Ferlita



Raymond Findley



Bryan Fink



Tim Gambill



Glen Gunter



Kirk Imhoff



Carl Harris



Maurice Haynes



Jamie Hazlett



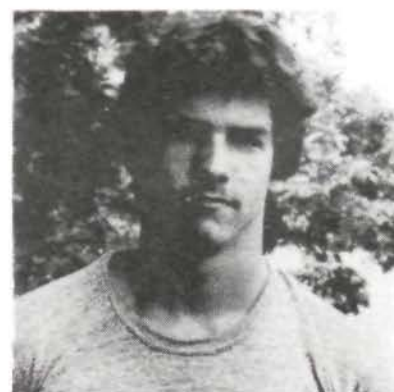
Andy Headrick



Laine Henkel



Darryl Hill



Chris Hindle



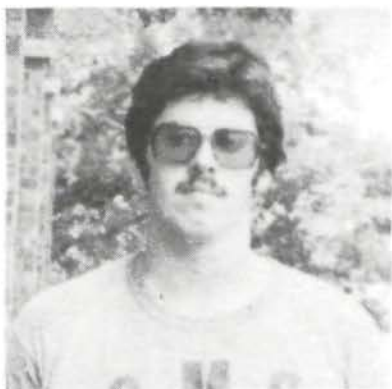
Jeff Huckaba, Manager



Alvin Hudson



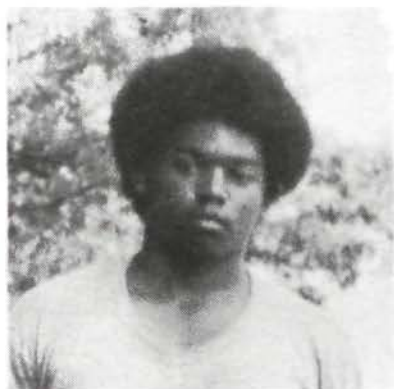
Dick Hutchinson



Robert Jones



Courtney Jones



E J Johnson



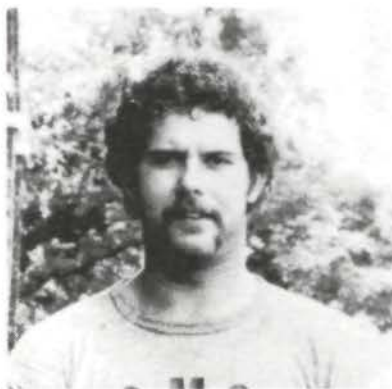
Jay Johnson



Martin Jasinski



Donald Kern



Danny Kesselring



Bernard Kimple



Mark Kozinski



Barry Krause



Larry Layden

HEART OF AMERICA ATHLETIC CONFERENCE MEMBERS

BAKER UNIVERSITY

Location: Baldwin City, KS
Nickname: Wildcats
President: Jerald C. Walker
Athletic Director: James Irick

GRACELAND COLLEGE

Location: Lamoni, Iowa
Nickname: Yellowjackets
President: Frank Hough
Athletic Director: Clayton Henry

OTTAWA UNIVERSITY

Location: Ottawa, KS
Nickname: Braves
President: Robert Shaw
Athletic Director: Elmer Roth

CENTRAL METHODIST COLLEGE

Location: Fayette, MO
Nickname: Eagles
President: Joe Howell
Athletic Director: James Luetjen

MID-AMERICA NAZARENE COLLEGE

Location: Olathe, KS
Nickname: Pioneers
President: R. Curtis Smith
Athletic Director: Steve Peterson

TARKIO COLLEGE

Location: Tarkio, MO
Nickname: Owls
President: Frank Bretz
Athletic Director: Chris Ragsdale

CULVER-STOCKTON COLLEGE

Location: Canton, MO
Nickname: Wildcats
President: Harold Doster
Athletic Director: Gene Hall

MISSOURI VALLEY COLLEGE

Location: Marshall, MO
Nickname: Vikings
President: Robert Glass
Athletic Director: Ken Gibler

WILLIAM JEWELL COLLEGE

Location: Liberty, MO
Nickname: Cardinals
President: Thomas Field
Athletic Director: Larry Hamilton

CENTRAL METHODIST COLLEGE

Highlights

Central Methodist College, a fully accredited four-year degree granting coeducational college, is located in Fayette, Missouri. With emphasis on the liberal arts and sciences, the curriculum offers the student an opportunity to achieve a liberal education plus the specialized knowledge related to a particular area.

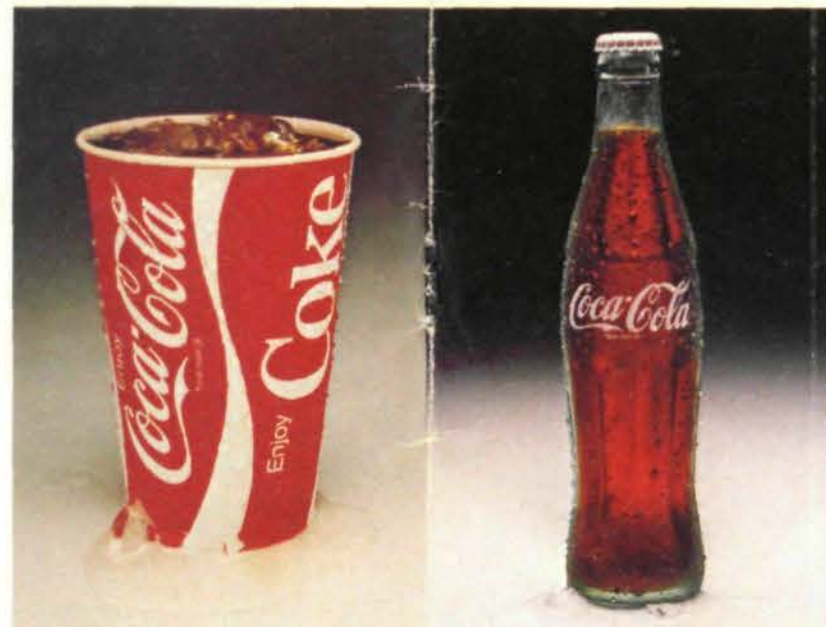
Established in 1854, Central Methodist College is proud to serve as the only United Methodist College in the state. CMC is non-sectarian in its admissions and educational programs.

The basic aims of the institution are to promote and advance learning in all branches. While encouraging the development of the mind, the college attempts to provide the means and instrumentalities designed to exercise wholesome moral and religious influence on the student body.

CENTRAL METHODIST COLLEGE FOOTBALL ROSTER

5-Scott Sisson	6-2	212	K	Jr	Pacific, MO
6-Danny Wilson	6-1	154	P	So	Fayette, MO
7-Mark Kozinski	6-0	181	DB	So	Fayette, MO
Willie Wilson	5-10	185	OL	Jr	Columbus, MS
9-Glen Gunter	5-11	180	DB	So	St. Charles, IL
10-Larry Layden	6-1	180	DB	Jr	Bonne Terre, MO
12-David Ross	5-9	168	REC	Sr	Independence, MO
13-Jay Vaughn	5-11	170	DB	Fr	O'Fallon, MO
14-Steve Selvey	6-1	162	DB	Fr	Ava, MO
15-Oscar Gaston	5-7	162	RB	Sr	St. Louis, MO
16-Dave Conrady	6-0	180	LB	So	St. Charles, MO
17-Jay Johnson	5-11	155	DB	So	Palmyra, MO
18-Mark Baker	6-2	158	K	Fr	Gower, MO
19-Craig Brown	6-2	188	DB	Jr	Denton, TX
20-Chuck Thole	6-1	176	REC	So	Pleasanton, CA
21-Kevin Childress	5-11	165	DB	Fr	Roanoke, TX
23-Mark Carrington	5-11	165	DB	Sr	Columbia, MO
24-Tom Whitson	6-1	176	RB	So	Palmyra, MO
25-Tony Livingston	5-10	174	RB	Sr	Peculiar, MO
26-Buzz Ferrell	5-11	150	REC	Fr	Sikeston, MO
27-Wilbert Peebles	6-1	204	RB	Jr	Kimloch, MO
28-Homer Mallory	5-11	180	RB	Fr	St. Louis, MO
29-"EJ" Johnson	5-7	175	RB	Fr	St. Louis, MO
30-Alvin Hudson	5-7	165	DB	Jr	Strens, MS
31-Kevin Burton	5-11	171	DB	Fr	St. Louis, MO
32-Chris Hinkle	5-10	173	DB	Fr	Redwing, MN
33-Carl Harris	5-8	160	RB	Fr	St. Louis, MO
34-Tony Whitson	6-1	172	DB	So	Palmyra, MO
35-Bernard Kimple	5-11	185	DB	Fr	St. Louis, MO
36-Barry Krause	5-11	157	REC	Fr	Bland, MO
37-Mark Loge	5-11	170	DB	Jr	Mapaville, MO
38-Jerry Luna	5-10	175	DB	Fr	Maryland Heights, MO
39-Vance Phillips	6-0	159	DB	Fr	Wellington, MO
40-Kevin Austene	6-1	184	DB	Jr	Hallsville, MO
41-Michael Banks	5-10	175	REC	Fr	Lockport, IL
42-Ted Shemwell	6-0	165	DB	So	Shelbina, MO
43-Roger Pritchett	6-0	183	LB	Fr	Steele, MO
44-Larry Clark	5-7	155	RB	Fr	Charleston, MO
45-Bobby Wallace	5-11	170	REC	Fr	St. Louis, MO
46-Jeff Stack	5-10	185	RB	Fr	Sullivan, MO
47-Vernon Straw	5-11	162	DB	Fr	Clinton, MO
48-Mike Reinhart	5-8	180	RB	Fr	Maryland Heights, MO
49-Maurice Haynes	5-9	192	DB	Fr	St. Louis, MO
50-Courtney Jones	5-9	203	OL	Fr	St. Louis, MO
51-Robert Jones	5-11	201	OL	Fr	Bowling Green, MO
52-Dean Sturm	5-10	167	LB	Fr	Lakewood, CO
53-Mike Anderson	6-0	180	OL	So	Frankfort, IN
54-Kirk Imhoff	6-1	197	LB	Fr	St. Louis, MO
55-Mike Selby	6-0	213	OL	Fr	Hurst, TX
56-David Smith	6-4	217	LB	Fr	Overland, MO
57-Everett Pryer	5-11	210	LB	Fr	Portageville, MO
58-David Matthews	5-10	185	LB	Jr	California, MO
59-Wally Sims	5-11	175	OL	Fr	St. Louis, MO
60-Kevin Roberts	6-1	220	OL	Sr	Columbia, MO
61-Billy Joe White	6-0	267	OL	Fr	Forest Green, MO
62-Tim Gambill	5-10	202	LB	Sr	Fayette, MO
64-Gerald Bowen	5-9	216	OL	Fr	Granite City, IL
66-Danny Kesselring	6-3	211	OL	Jr	Potosi, MO
67-Dick Hutchinson	6-1	206	LB	Sr	Versailles, MO
68-Jim Ross	6-3	215	LB	Sr	Elstern, MO
69-Raymond Findley	6-1	246	OL	Fr	Edwards, MO
70-Lynn Scott	6-0	225	OL	So	Bowling Green, MO
71-Ken Barton	5-11	225	OL	Fr	Fenton, MO
73-Steve Branning	6-1	225	OL	Fr	Bonne Terre, MO
74-Chris Sturm	6-2	228	OL	So	Lakewood, CO
75-Herb Standeven	6-4	206	OL	So	St. Charles, MO
76-Tom Cook	6-0	230	OL	Fr	Raytown, MO
77-Andy Headrick	6-1	244	OL	Sr	St. Louis, MO
78-Laine Henkel	6-4	200	REC	Fr	Des Moines, IA
79-Rod Mathewson	6-3	201	OL	So	Sutter, IL
80-Tom Pondel	6-0	177	REC	So	Romeoville, IL
81-T.J. Ferlita	6-2	210	REC	Jr	Tampa, FL
82-Brian Fink	6-1	182	REC	Fr	Urbandale, IA
83-Donald Kern	6-1	192	REC	Fr	Springfield, MO
84-Martin Jasinski	6-0	159	REC	Fr	Arnold, MO
85-Jeff Blair	6-3	214	OL	So	New Lenox, IL
86-Darryl Levy	6-2	231	OL	So	Maryland Heights, MO
87-Gon Bockius	5-11	184	TE	Fr	St. Louis, MO
88-Donnie Wilson	5-10	158	REC	Fr	St. Louis, MO
89-Mark Truitt	5-11	163	REC	Fr	Macon, MO
90-Darryl Hill	5-10	165	REC	So	Curryville, MO
91-Ken Steward	6-0	140	DB	Fr	Marshfield, MO
92-Jamie Hazlett	6-2	185	P	So	Fayette, MO
94-Brad Burks	5-7	176	LB	Fr	Raytown, MO

Have a Coke[®]
and a smile.
Have a Coke[®]
and a smile.
Have a Coke[®]
and a smile.

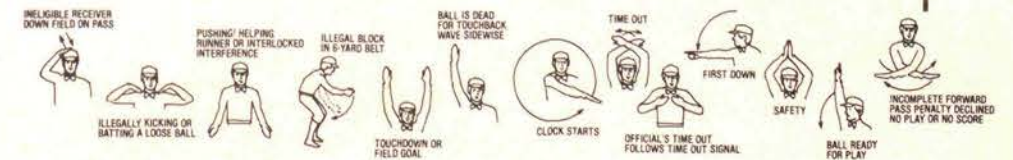
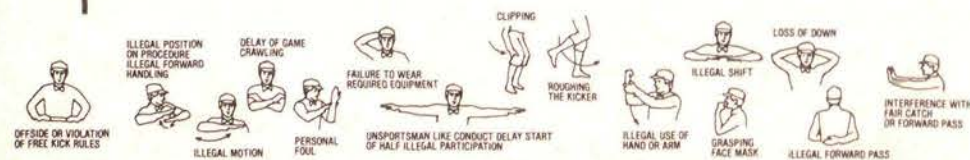


mmmm...Coke[®] adds life.

Coca-Cola[®] and "Coke" are registered trademarks which identify the same product of The Coca-Cola Company.

WILLIAM JEWELL FOOTBALL ROSTER

2-Charles Hilton	6-1	170	DB	Fr	University City, MO
5-Mike McGill	5-11	185	WR	Sr	West Union, WV
7-Andre Nelson	5-10	160	DB	So	Warsaw, MO
9-Dan Christian	5-9	165	DB	So	St. Louis, MO
10-Kelly Groom	6-0	175	DB	Jr	La Grange, MO
11-Chris Kahill	6-0	172	DB	Fr	Allerton, IA
12-Scott Sandridge	6-2	170	DB	So	Kansas City, MO
14-Randy Doyle	6-1	170	WR	So	Oakland, CA
16-Wendie McGill	6-0	180	LB	Sr	Danuthersville, MO
17-Jeff McGuire	6-2	195	P	So	Liberty, MO
18-Paul Troth	6-2	190	DB	So	Graham, MO
19-Greg Jacobson	6-0	185	RB	Jr	Kansas City, MO
21-Barry Brown	5-10	155	DB	Jr	Crevecoeur, MO
23-Vic DeVault	5-9	172	RB	Sr	Rolla, MO
25-Steve Montgomery	6-1	195	RB	Fr	Stockton, MO
26-Semondras Gilestie	5-11	170	RB	So	St. Louis, MO
27-Darryl Schwabe	5-9	155	WR	So	Kansas City, MO
28-Jack Brandon	5-11	175	RB	Fr	Kansas City, MO
29-Jerry Burch	6-2	200	K	So	Kingdom City, MO
30-Bob Bopp	5-10	180	DB	Fr	St. Louis, MO
33-Greg Cliveringer	5-11	195	DE	So	Liberty, MO
34-David Miller	6-0	185	DE	So	Linnens, MO
35-Steve Hodges	5-10	200	RB	So	St. Louis, MO
36-Steve Craig	5-7	165	RB	So	St. Louis, MO
38-Alan Graig	5-11	185	RB	Sr	Union, MO
39-David Armstrong	6-0	180	DB	Jr	Wood River, IL
40-Brian Fairchild	5-10	170	DB	So	Clinton, MO
41-Paul Taylor	6-1	175	DB	So	St. Louis, MO
44-Mike Clark	6-2	200	LB	Fr	Union, MO
44-Arch Davis	5-11	175	DE	So	Belton, MO
45-Doug Switzer	5-10	170	DB	Jr	Chillicothe, MO
46-Mike Newman	5-11	160	DB	So	Kansas City, MO
47-Steven Enemem	6-0	210	LB	Fr	Ballwin, MO
48-Ire Chadler	6-1	205	LB	Fr	University City, MO
49-Mike Nelson	5-10	170	DB	So	Parkville, MO
50-Steve Palmer	6-2	205	C	Fr	Kansas City, MO
51-Greg Embree	6-1	215	C	Jr	Blue Springs, MO
52-Jerry Birchett	5-9	180	LB	Jr	Freeman, MO
53-Jan Redmond	6-0	224	LB	So	Kansas City, MO
54-Mike Rodger	6-4	210	OL	So	Baldwin, MO
55-Mark Mundell	6-1	215	OL	So	Brookfield, MO
56-Steve Mattagley	6-0	205	LB	Jr	St. Louis, MO
57-Tim Johnson	5-11	200	LB	Fr	Kansas City, MO
61-Chuck Tolley	6-2	225	OL	Jr	Graham, TX
62-Todd White	6-0	210	OL	So	Marceline, MO
63-Bill Devan	6-3	230	OT	Fr	Omaha, NE
65-Wayne Schmidt	6-2	215	OT	Sr	Tonawanda, NY
66-Guy Weber	6-1	225	OT	Jr	Hillsboro, MO
67-Gary Aanswath	6-1	205	LB	Sr	Carthage, MO
74-Lorne Bruns	6-4	225	OT	Jr	St. Clair, MO
75-Jeff Riggs	6-2	220	OT	So	Overland Park, KS
76-Ralph Yeater	6-2	235	OT	Jr	Kansas City, MO
79-Dwight Fay	6-4	225	OT	Sr	Centralia, MO
80-Troy Mitchell	5-10	180	DE	So	Hannibal, MO
82-Paul McDermott	6-2	200	DE	Fr	Kansas City, MO
83-Marty Hensley	5-11	168	WR	Sr	Lee Summit, MO
84-Jerry Twigg	6-2	185	DE	So	Liberty, MO
86-Jim Reed	6-3	195	WR	So	Palatka, IL
87-Terry Oliphant	6-2	225	TE	Fr	Independence, MO
88-Scott Martin	6-1	210	TE	Jr	Kansas City, MO
90-Robert Silvers	6-0	180	DE	So	Raytown, MO
92-Kevin Kincade	5-8	145	WR	Fr	Washington, MO
94-Steve Holman	6-1	250	OT	Fr	Tulsa, OK
97-Steve Herndon	5-11	165	K	Jr	Trenton, MO
99-Mike Phelps	6-4	240	TE	So	Kansas City, MO



THIS YEAR'S OPPONENTS

EVANGEL COLLEGE

Date: Sept. 12 Away 1:30 p.m.
 Location: Springfield, MO
 Enrollment: 1150
 Affiliation: Independent
 Nickname: Crusaders
 Head Coach: Denny Duron
 Last Year's Results: CMC 7 Evangel 28

WILLIAM PENN

Date: Sept. 19 Home 1:30 p.m.
 Location: Oskaloosa, IA
 Enrollment: 650
 Affiliation: NCAA
 Nickname: Statesmen
 Head Coach: Jim Spry
 Last Year's Results: CMC 10 William Penn 20

CULVER-STOCKTON COLLEGE

Date: Sept. 26 Home 1:30 p.m.
 Location: Canton, MO
 Enrollment: 600
 Affiliation: NAIA (HAAC)
 Nickname: Wildcats
 Head Coach: Vince Okruch
 Last Year's Results: CMC 9 Culver-Stockton 10

OTTAWA UNIVERSITY

Date: Oct. 3 Away 7:30 p.m.
 (Homecoming)
 Location: Ottawa, KS
 Enrollment: 600
 Affiliation: NAIA (HAAC)
 Nickname: Braves
 Head Coach: Nyle Salmans
 Last Year's Results: CMC 7 Ottawa 47

BAKER UNIVERSITY

Date: Oct. 10 Away 1:30 p.m.
 Location: Baldwin City, KS
 Enrollment: 900
 Affiliation: NAIA (HAAC)
 Nickname: Wildcats
 Head Coach: Charlie Richards
 Last Year's Results: CMC 10 Baker 71

MISSOURI VALLEY COLLEGE

Date: Oct. 17 Home 2:00 p.m.
 (Homecoming)
 Location: Marshall, MO
 Enrollment: 500
 Affiliation: NAIA (HAAC)
 Nickname: Vikings
 Head Coach: Ken Gibler
 Last Year's Results: CMC 8 Missouri Valley 23

WILLIAM JEWELL

Date: Oct. 24 Home 1:30 p.m.
 Location: Liberty, MO
 Enrollment: 1450
 Affiliation: NAIA (HAAC)
 Nickname: Cardinals
 Head Coach: Stan McGarvey
 Last Year's Results: CMC 14 William Jewell 34

GRACELAND COLLEGE

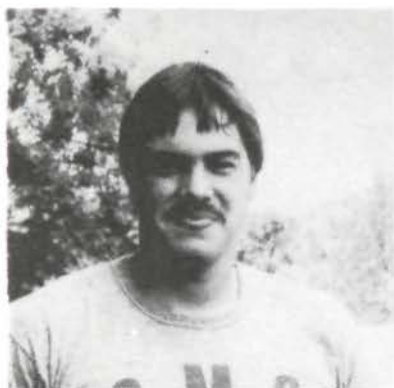
Date: Oct. 31 Away 1:30 p.m.
 Location: Lamoni, IA
 Enrollment: 1325
 Affiliation: NAIA (HAAC)
 Nickname: Yellowjackets
 Head Coach: William Dudeck
 Last Year's Results: CMC 33 Graceland 27

MID-AMERICAN NAZARENE

Date: Nov. 7 Away 1:30 p.m.
 Location: Olathe, KS
 Enrollment: 1200
 Affiliation: NAIA, NCCAA
 Nickname: Pioneers
 Head Coach: Gordon DeGraffenreid
 Last Year's Results: CMC 27 Mid-America 28

TARKIO COLLEGE

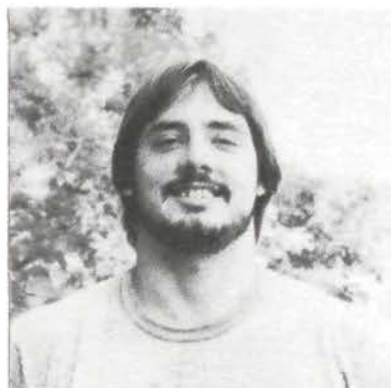
Date: Nov. 14 Home 1:30 p.m.
 Location: Tarkio, MO
 Enrollment: 500
 Affiliation: NAIA (HAAC)
 Nickname: Owls
 Head Coach: Scott Swofford
 Last Year's Results: CMC 31 Tarkio 24



Darryl Levy



Tony Livingston



Mark Loge



Jeff Lotz



Jerry Luna



Rod Mathewson



David Matthews



Homer Mallory



Vancel Phillips

**1981 CMC
FOOTBALL
PLAYERS**



Wilbert Peebles



Tom Pondell



Everett Preyer



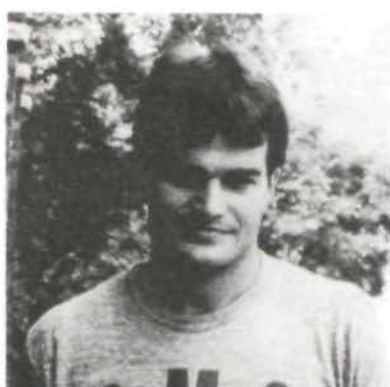
Roger Pritchett



Mike Reinhart



Kevin Roberts



David Ross



Jim Ross



Lynn Scott



Ted Shemwell



Mike Selby



Steve Silvey



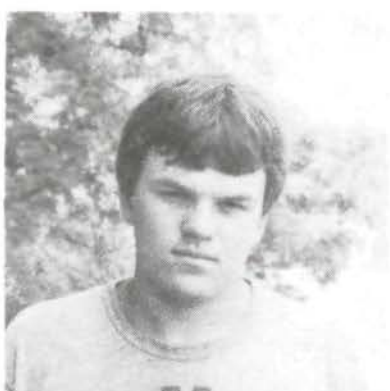
Wally Sims



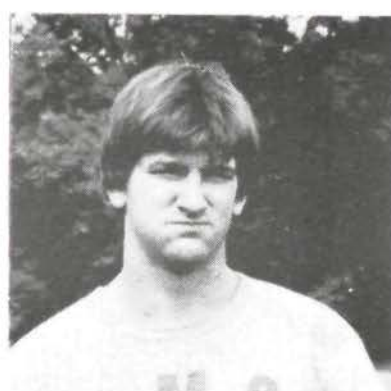
Scott Sisson



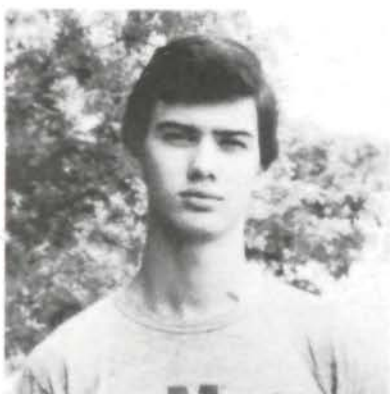
David Smith



Jeff Stack



Herb Standeven



Kevin Stewart



Vernon Straw



Chris Sturm



Dean Sturm

**1981 CMC
FOOTBALL
PLAYERS**



Chuck Thole



Mark Truitt



Jay Vaughan



Bobbie Wallace



Billy Joe White



Tom Whiston



Tony Whiston



Danny Wilson



Donnie Wilson



Willie Wilson

BASKETBALL



Head Coach Ken Ash has a strong nucleus returning from last season's squad that captured the Heart of America Conference Championship. Last year the Eagles posted an overall record of 24-8, including a 15-1 mark in the conference and an unbeaten record in 12 home games.

Leading the returnees this season will be sophomore center Danny Widhalm. The 6-8 second year player led the Eagles in scoring and rebounding last season while being named Most Valuable Player in HAAC and a first-team member of the NAIA District 16 All-Star team. Teaming up with Widhalm will be returnees Jeff Sherman, Craig Kennedy, Mike Forsyth, and Duane Widhalm. In addition, Ash has recruited some highly touted junior college transfers and other high school players who were All-Staters.

Ken Ash, a native of Columbia and graduate of the University of Missouri, is heading into his fifth season as head coach. His overall record the past four seasons at Central Methodist is an impressive 91-26.

WOMEN'S SOFTBALL

Repeating as the seventh best team in the nation is no easy task for any team. But at Central Methodist College, the women's softball team has the personnel and potential to travel to the NAIA national softball tournament again this season.

Under Head Coach Ron Dempsay, the Eagles finished last season with a 15-12 record including two post-season victories over Missouri Valley College to advance to the nationals. This season, four of last year's All-District selections will form the nucleus for the squad. They include outfielder Susan Hardy, second baseman Chris Gambill, shortstop Joni Stevenson, and pitcher Linda Goetz.

Coach Dempsay is optimistic the Eagles can continue their winning tradition. "We had a good recruiting year and some of the new freshmen will be pushing the returning players for starting positions."



PHYLLIS RICHARDSON

CENTRAL METHODIST COLLEGE VOLLEYBALL SCHEDULE 1981

DATE	OPPONENT	TIME
Sept. 25-26	at Evangel-Drury Tournament	
Tue., Sept. 29	at Univ. MO-Kansas City, MO Valley College	6:00
Thu., Oct. 1	Stephens, Tarkio	7:00
Tue., Oct. 6	Avila College, Westminster	6:00
Fri., Oct. 9	at Drury College, School of the Ozarks	6:30
Sat., Oct. 10	at Southwest Baptist College	10:30
Tue., Oct. 13	Missouri Valley, William Woods	6:00
Tue., Oct. 20	Missouri Western, Columbia College	6:00
Tue., Oct. 27	at Rockhurst College	6:30
Oct. 30-31	at HAAC Tournament, William Jewell	
Nov. 6-7	NAIA District 16 Tournament	4:00

1981 CROSS-COUNTRY SCHEDULE

DATE	OPPONENT	PLACE
Sept. 12	Parkhill/Park College Invitational	Swope Park
	Women 5,000 at 10:15; Men 3.5 m 11:15	Kansas City
Sept. 19	Mid-America Nazarene College Invitational	Olathe, KS
	Women 3m, 10:30; Men 5m, 11:00	
Sept. 26	Southwest Baptist University Invitational	Bolivar, MO
	Women 3m, 11:00; Men 5m, 11:30	
Oct. 2	Missouri Intercollegiate Meet	Gustin Golf Course
	Women 5,000 at 5:00; Men 8,000 at 5:30	Columbia
Oct. 10	Central Methodist College Invitational	Fayette
	Women 5,000 at 10:30; Men 5m, 11:00	
Oct. 17	Washington University Invitational	Forest Park
	Women 3m, 11:00; Men 5m, 11:30	St. Louis
Oct. 24	Westminster College Invitational	Fulton
	Women 5,000 at 10:30; Men 8,000 at 11:00	
Oct. 30	Heart of America Athletic Conf. Meet, 2:00	Tarkio
Nov. 7	NAIA District 16 Meet	Park College
	Women 5,000 at 10:30; Men 5m, 11:00	Parkville
Nov. 21	NAIA National Meet	Kenosha, WI
	Women 5,000 at 10:00; Men 8,000 at 11:00	



KEN BURRE



BILL HOLMES

1981 VARSITY SOCCER SCHEDULE

DATE	OPPONENT	TIME
Wed., Sept. 2	Tarkio College	3:00
Sat., Sept. 5	at Rockhurst College	2:00
Thu., Sept. 10	at Harris Stowe College	4:00
Tue., Sept. 15	Bible Baptist College	3:30
Thu., Sept. 17	Lincoln University	3:00
Tue., Sept. 22	at Westminster College	
Sat., Sept. 26	UMKC	11:00
Mon., Sept. 28	at Lindenwood College	7:00
Sat., Oct. 3	at Mo. Southern	
Fri., Oct. 9	Kemper	3:30
Wed., Oct. 14	at Maryville	4:00
Sat., Oct. 17	Mid-America Nazarene	11:00
Sat., Oct. 24	William Jewell College	10:30

FEATURED TWIRLER

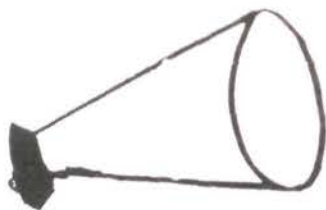
Vicki Kirchoff has been twirling since the age of three and the 20-year-old sophomore will be entering her second year as the featured twirler for the CMC Marching Band. The Marching Band, under the direction of Keith House, provides the halftime entertainment at all football games as well as other athletic events and concerts throughout the year.

Vicki, a native of California, Missouri, is a pre-law major.



POM PONS

Left to right: Tina Sabo, Laurie McMillan, Teri Blair, Bonita Triplett, Katie Sturtevant, Janell Thompson.



CHEERLEADERS

Back row (left to right): Dixie Gowin, Jan Blankenship, Jacque Knight. **Front row:** Lori Simmons.



DEGREES OFFERED AT CENTRAL METHODIST COLLEGE

Degree programs are offered in both two and four year programs. Majors and Concentrations are available in these areas:

FOUR-YEAR DEGREE PROGRAMS:

Accounting
Administration
Art
Astronomy
Biology
Business Education
Chemistry
Economics
Elementary
Education
English
History and Political
Science
Mathematics
French
German
Spanish

Music Education
Music History and
Theory
Music Performance
Nursing
Philosophy
Physical Education
Physics
Pre-Medical
Psychology
Religion
Sociology
Social Work
Speech & Dramatic
Arts

{ Modern
Languages
& Literature

TWO-YEAR PROGRAMS:

English (Writing Option)
Nursing
Secretarial Science

GOOD LUCK EAGLES

KLINE

INSURANCE AGENCY

124 E. Morrison
Fayette, MO
Ph. 248-3322

MEYER

INSURANCE AGENCY

515 First St.
Glasgow, MO
Ph. 338-2021



Howard County's Only Independent Agencies

Auto • Home • Farm • Commercial • Life and Health Insurance

We Don't Work for Just One Company, We Work for You

HOWARD ELECTRIC COOPERATIVE

Highway 5 & 240 North
"Use Your Electricity Wisely"



Conservation is the order of the day, both in the interest of the nation and in the interest of your pocket book.

Be sure you have proper insulation in the ceiling, walls and floors; storm windows and doors; weather stripping around windows and doors; insulated hot water pipes and heating ducts; and a properly operating heating system. Help yourself by practicing conservation in the use of all forms of energy.

Fayette, Missouri

All Kinds of PRINTING

WOOD CREEK PRINTERS & PUBLISHERS

202 E. Morrison
Fayette, MO 65248

Phone: 816-248-5223

Open 8 a.m. — 5 p.m. Mon.-Fri.

H. Denny Davis ex '48

Head-Quarter's Hairstyling

***106 W. Davis
Fayette, Missouri***

***Men's & Women's
Hairstyling***

Ph. 248-2181

Mid Mo Farmers Coop

**Feed — Seed — Fertilizer
Chemical & Petroleum Products**

Fayette & Armstrong
Ph 248-3303 Ph 273-2222

Alsop & Graham Pharmacy



Full Fountain
and
Lunch Counter Service

Dale Graham

East Side of Square 111 Main St.
248-3362 Fayette

Sandy's Flowers and Gifts



Cut Flowers
Handmade Gifts

Easy-to Mail gifts for all ages

Open 8 a.m. — 5 p.m. Mon-Sat

248-3128

South Main Street

Sandy Lutz

Debby Lutz

COUNTRY PLACE

Monday - Saturday

7 AM - 12 Midnight

Sunday

7 AM - 10 PM

GROCERIES, SANDWICHES,
GAS, ICE COLD BEVERAGES

248-2287

Hwy. 5 & 240 N.

Fayette, Mo.

HOME OIL CO. Wholesale & Retail

Complete Car Servicing

Linn & Morrison
248-3355

Church & Davis
248-3900

FAYETTE, MISSOURI

**Quality Clothing
For Men and Women
Levi — Jantzen
Pacific Trail
Formal Wear Rental**

Keith's

South Side of Square

248-2183

Miller's IGA Foodlane

**U.S. Choice Meats
Natures Best Produce
On the Square**



248-3275

Fayette, Mo.

McMILLAN'S CAFE

DUDE McMILLAN
Honorary C Club Member

**112 South Main St.
Fayette, Missouri**

**Pennzoil and Quaker State
Motor Oils**

**Sporting Goods • Metric Tools
Auto Accessories and Supplies**



Joe and Betty Turner

107 N. Main

East Side Square

Open 8 a.m. — 5 :30 p.m. Mon.-Sat.

DAVE'S UNITED SUPER

Quality Meats
Freshest Produce
Beer & Wine
Fresh Bakery Products
Your Full Service
Grocery Store

CMC BOOSTER

Phone 248-3328

Fayette, Missouri

DONNELLY MOTORS



Phone: 816-248-3301

Hwy. 5 & 240, North
Fayette, Missouri 65248

D and H Prescription Drug Store

Russell Stover Candies
Hallmark Cards



Phone 816-248-2275
North Side of Square
Fayette, Mo. 65248

Campus Bookstore

Located in Old CMC Library Basement

Magazines - Textbooks - Paperbacks
Teacher Aids - Gifts - CMC T-Shirts
CMC Mugs & Souvenirs
American Greeting Cards
School & Office Supplies
Sporting Goods - Stuffed Animals
Children's Books

Scrumpdillyishus!

**Brazier* Foods
and
Dairy Queen Treats**

John & Sandy Smith

Highway 5

Fayette, Missouri



*Reg. U.S. Pat. Office Am. DQ Corp.
Copyright 1977, Am. DQ Corp. Mpls. Minn.

FAYETTE

True Value ®

HARDWARE

Nation's Largest Hardware Chain

Over 5,000 Stores in 50 States

**Hardware
Sporting Goods**

**Paints
Gifts**

248-2436

120 E. Davis

Fayette, MO 65248

**Cornbread's
Restaurant**

After the Game

**Steak - Seafood
Italian Spaghetti**

**Phone 816-248-5170
South Side of Square
Fayette, MO 65248**

We Feature

- Keds
- Converse Athletic Shoes
- Connies
- Kangaroo Athletic Shoes
- Red Wing Work Shoes

**FAYETTE
SHOES**

Your One Stop Family Shoe Store

Open 9 a.m.-5:30 p.m. Mon.-Sat.

**North Side of Square
LARRY SMITH**

**248-3173
DARLENE SMITH**

ALMA MATER OF CENTRAL METHODIST COLLEGE

Amid the mystic shades of eve at nightfall,
Across horizons where thy fair light falls,
Thy tow'rs arise --
Ennobled spires of all the years
That bless thy name, our Alma Mater.

Through years of toil and comradeship together,
'Mid friendly scenes and spirited endeavor,
Fearless and free --
With loyalty we've lived for thee,
Central, for thee, our Alma Mater.

Unto these last of college days together,
With mingled thoughts of distant days that sever,
Strong in thy faith --
Our hope and heart we pledge to thee,
Central, to thee, our Alma Mater.

Words by Bernard E. Meland

FIGHT SONG

Hail victory, to thee we sing our loudest praise
Hail Green and Black the banner we so proudly raise
Hail victory, --- to thee we give our fighting strength
Hail Central Eagles, Fight on, Fight on, to victory.

Robert E. Stepp '40

Schnell
FLORAL CO.



"The Finest in Flowers and Gifts"

Ambassador Cards

Your Personal Envoy of Good Taste

Bud Schnell

Open 8 a.m.-5 p.m. Mon.-Sat.

South Side of Square

816-248-2141

**CENTRAL
METHODIST COLLEGE
" C " CLUB
VARSITY LETTER WINNERS**