

Central Methodist College

1979 OFFICIAL
FOOTBALL PROGRAM

50¢



FROM THE PRESIDENT OF THE COLLEGE:

Undergraduate athletics are definitely a part of the total academic experience at Central Methodist College. It is in this spirit that we begin our 1979 football season under the new leadership of Coaches Don Shinnick and Don Kistler. Through their past experiences these two men have exemplified what it means to emphasize the values of athletics which support strength of character and dedication of purpose. I applaud the noticeable emphasis by these coaches on the importance of the individuals; their studies and their Christian ethics along with the desire to perform on the football field. It is our intention to encourage this emphasis in all our athletic programs so that both parents and players can be proud of having participated in athletics at Central Methodist College.

I personally want to thank those of you who are supporting the teams through your attendance at the games. Central Methodist College is putting her best foot forward to present a wholesome and exciting afternoon's entertainment through the combination of our bands, cheerleaders, teams and other student performing groups representing our fine student body.



DR. JOE A. HOWELL, PRESIDENT



DR. JAMES M. LUETJEN

AND THE DIRECTOR OF ATHLETICS:

Small College Athletics is an extremely exciting program and in many ways more exciting than any other level of athletic competition. At Central Methodist College we are extremely interested in a winning program, however, we are as vitally concerned with the development of the young people morally, spiritually, and academically. We believe that these are compatible goals.

CENTRAL METHODIST COLLEGE

President of College	Dr. Joe A. Howell
Dean of College	Dr. Ron Bell
Athletic Faculty Representative	Robert Shields
Location	Fayette, Missouri
Street Address	N. Church Street
Enrollment	666
Phone Number	816-248-3391
Founded	1854
Stadium	Davis Field
Colors	Green & Black
Nickname	Eagles
Conference	Heart of America
National Membership	NAIA District 16

ATHLETIC STAFF

Dr. James M. Luetjen	Director of Athletics
Don Shinnick	Head Football Coach
	Head Baseball Coach
Don Kistler	Head Track Coach
	Asst. Football Coach
Ken Ash	Head Basketball Coach
	Golf Coach
Phyllis Richardson	Women's Volleyball Coach
	Women's Tennis Coach
Ken Burres	Cross-Country Coach
Dang Pibulvech	Soccer Coach
	Men's Tennis Coach
Nancy Nowotny	Women's Basketball Coach
	Women's Softball Coach
Kathy Johnson	Athletic Trainer

Compliments
of
FREDDI-MIX



National Association of Intercollegiate Athletics

THE NAIA IN PERSPECTIVE



HARRY FRITZ
EXECUTIVE DIRECTOR

The basic concept upon which the philosophy of the NAIA is focused is that the intercollegiate athletics program of member institutions should be an integral part of the total educational program, subject to the same aims, policies and objectives as are other departments and programs.

The total intercollegiate program must be the full responsibility of the President and his administrative staff who must be in full control of the financial policies and procedures which govern the athletics program. A sound athletics program should be sponsored with the basic intent of providing the benefits of participation in athletics to as many students as possible. Gate receipts, although often essential, should not be the primary criterion for judging the success of the intercollegiate athletics program. Intercollegiate athletics must continually justify its full membership in the educational family of the member institution and, with proper administration, provide benefits to the athlete and the institution that are commensurate with this status and financial support.

For those institutions wishing to organize and administer intercollegiate athletics as a part of the total educational program, NAIA was established to provide opportunities for inter-institutional competition at the highest level of ability. National, district and area recognition is available through a program of 15 national championship events.

Academic policies have been adopted which assure that NAIA student-athletes first fulfill their responsibilities as students. Competitive eligibility must be completed within five years of attendance. The NAIA has adopted rules and standards which require that a student-athlete be fully eligible in every intercollegiate contest in which he competes for his

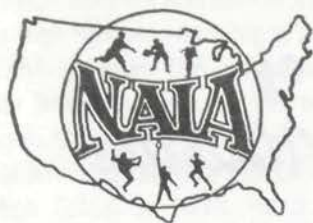
institution. This stringent academic requirement is unique among organizations administering intercollegiate athletics on the national level.

The NAIA is organized so that the major responsibility for the administration of rules and standards lies within the thirty-one districts through a carefully selected District Eligibility Committee. Similarly, the thirty-one District Executive Committees have the major responsibility for administering a broad district participation program, consistent with nationally adopted policies.

The national events program structure makes it possible for any qualified member institution to compete in these events. However, income from all national events, as well as all other income, is used for the benefit of the total program and, secondly, for the benefit of the individual institutions that participate in national events. Consequently, member institutions have a responsibility to give preference to the NAIA program in their consideration of participation in post season or national events.

The philosophy of the NAIA is geared to those colleges and universities of moderate enrollment that administer their varsity sports programs on a sound educational and financial basis. The NAIA is not in competition with any other organization and seeks to support and compliment those with similar philosophies and goals. The test of the soundness of the NAIA philosophy is the continually growing strength of the organization.

The NAIA membership currently includes 520 four-year, fully accredited, degree-granting institutions, plus 40 affiliated conferences.



National Association of Intercollegiate Athletics

Dear Football Fans:

Your support of intercollegiate athletics, and other activities programs offered by your favorite college or university, reflects your belief in the young men and women who are being educated on our great campuses for leadership in tomorrow's world. Your attendance here today has important meaning for both the institutions involved and the participants.

There is nothing quite like the pageantry and excitement of American college football. It is the strong feeling of the National Association of Intercollegiate Athletics that football and other sports are an integral aspect of the total educational program. Over 70,000 student-athletes are annually involved in the varsity sports programs in the NAIA's more than 500 member institutions. We are very pleased that the Fall football program provides the vehicle for alumni and community involvement on campus, as well as a robust and desirable activity for the students.

The NAIA strives for a well balanced and comprehensive program of activities — one that meets the needs and interests of the total student population. Currently the NAIA conducts 15 national championships in 14 different sports.

This is the second year of a new NAIA football playoff format that assures eight teams in Division I and eight teams in Division II an opportunity to compete for coveted national titles in each division. Angelo State University (TEX) is the defending Division I champion and Concordia College (MN) won the Division II crown last year, narrowly defeating Findlay College (O), 7-0 in a game played at Findlay.



W. C. MYERS

This year the Division I Championship Game will again be played as the Palm Bowl in McAllen, Texas. The Palm Bowl will provide an ideal setting for the 24th renewal of the NAIA Football Championship.

I echo the sentiments of our entire membership when I say thanks to you for your loyal support in helping make today's football game an outstanding athletic competition in the best tradition of American higher education. Return often. Welcome to today's game and congratulations on being a participant in an event that is associated with the best features of American life.

W. C. MYERS
PRESIDENT, 1979-80
NAIA

NAIA FOOTBALL

Established in 1940 as the National Association of Intercollegiate Basketball, the NAIA emanated from a "National Small College Basketball Tournament" inaugurated in 1937.

Football, one of 15 national championship events conducted by the NAIA, became part of the NAIA championship program in 1956. The first two years, only two teams were selected for the championship, but in 1958, the NAIA inaugurated a playoff system to determine which teams would advance to the championship game.

NAIA football teams were lumped together in one division for 13 years — from 1956 to 1969. Division II became a reality in 1970 following a year-long study of the membership and an endorsement by the NAIA Football Coaches Association.

Four teams made up the playoff field in each division until 1978 when the championship series was expanded to include eight teams and went from two weekends and seven playoff games to three weekends and 14 playoff games.

The first championship game was played in 1956 with St. Joseph, Ind. and Montana State battling to an 0-0 tie in the

mud in the Aluminum Bowl in Little Rock, Ark. Moving to St. Petersburg, Fla., in 1957 until 1961, the championship game was called the Holiday Bowl. In 1961 the title game moved to Sacramento, Calif., became known as the Camellia Bowl and remained on the West Coast until 1964.

The Champion Bowl became the official name in 1964 and held that title through the 1976 championship game. The last two championship games have been played at neutral sites — Seattle (Apple Bowl, 1977) and McAllen, Tex. (City of Palms Bowl, 1978).

All nine of the Division II championship games have been played at either on-campus sites or nearby locations.

Texas A&I University, holders of the NAIA record for consecutive victories (42) and the longest unbeaten streak (46 games) has captured six of the previous 23 national championship title games.

Westminster PA has won three national titles and Texas Lutheran has taken two crowns since Division II was formed in 1970.



National Association of Intercollegiate Athletics

THE NAIA CHAMPIONSHIP FOOTBALL PLAYOFF SYSTEM

DIVISIONS AND AREAS

Unlike basketball, where NAIA institutions compete in Districts, NAIA football institutions are classified according to Divisions I or II. When the NAIA divided into divisions in 1970 member institutions were given an opportunity to declare in which division they wished to compete. The NAIA Football Coaches Association Review Board has had the authority to rule on changes within divisions and an institution is required to spend at least two seasons in a given division once it is placed there.

Within each division member institutions are arranged according to geographic areas:

DIVISION I

Area 1—Alaska, Colorado, Hawaii, Idaho, Kansas, Minnesota, Missouri, Montana, Nebraska, North Dakota, Oregon, South Dakota, Utah, Washington, Wyoming.

Area 2—Arizona, Arkansas, California, Nevada, New Mexico, Oklahoma, Texas.

Area 3—Connecticut, Illinois, Indiana, Iowa, Maine, Massachusetts, Michigan, New Hampshire, New Jersey, New York, Ohio, Pennsylvania, Rhode Island, Vermont, West Virginia, Wisconsin.

Area 4—Alabama, Delaware, District of Columbia, Florida, Georgia, Kentucky, Louisiana, Maryland, Mississippi, North Carolina, South Carolina, Tennessee, Virginia.

DIVISION II

Area 1—Alaska, Hawaii, Idaho, Montana, Nebraska, North Dakota, Oregon, South Dakota, Washington, Wyoming.

Area 2—Arizona, California, Colorado, Kansas, Nevada, New Mexico, Oklahoma, Texas, Utah.

Area 3—Connecticut, Iowa, Maine, Massachusetts, Michigan, Minnesota, Missouri, New Hampshire, New Jersey, New York, Rhode Island, Vermont, Wisconsin.

Area 4—Alabama, Arkansas, Delaware, District of Columbia, Florida, Georgia, Illinois, Indiana, Kentucky, Louisiana, Maryland, Mississippi, North Carolina, Ohio, Pennsylvania, South Carolina, Tennessee, Virginia, West Virginia.

THE RATERS

Teams selected for participation in the NAIA playoffs are determined by weekly ratings throughout the season. Selected members of the NAIA Football Coaches Association submit a weekly rating during a specified rating period

to determine which teams will participate in the post-season playoffs.

Each of the four geographical areas (see above) within the Division are allocated four raters, thus making 16 raters per division.

In 1979 the Division II rating period runs from Wednesday, September 19 to Wednesday, November 7 and the Division I rating period goes from Wednesday, September 19 to Wednesday, November 14.

SELECTION OF TEAMS

- Teams must declare their intent to participate in the NAIA championship football program by October 1.

- Teams must be ranked in the top 12 in the last regular-season weekly rating (Nov. 7 for Division II, Nov. 14 for Division I) to be considered for the playoffs.

- The top-ranked team from each of the four geographical areas (in each division) within the top 12 is automatically selected for the playoffs.

- The next four highest-ranked teams, **regardless of geographic area**, and not already selected, complete the eight-team field.

- No more than two teams from the same conference (within the same division) are selected for the playoffs.

- Teams may be paired according to geographic proximity to each other for the first round (quarterfinals) and members of the same conference would play each other in quarterfinal or semifinal rounds.

- Teams with four or more non-winning games will not be selected for participation in the playoffs.

1979 PLAYOFF DATES

DIVISION II

Quarterfinals — Saturday, November 17

Semifinals — Saturday, December 1

Championship — Saturday, December 8,
site of participant

DIVISION I

Quarterfinals — Saturday, December 1

Semifinals — Saturday, December 8

Championship — Saturday, December 15,
Palm Bowl, McAllen, TEX

MEET THE HEAD COACH:

Don Shinnick was born in Kansas City, Missouri 44 years ago. He went to High School in San Pedro, California and was a star athlete at UCLA in 1954-56. From 1957-69 he was an outstanding pro football player with the Baltimore Colts. He has been a coach with the Chicago Bears, St. Louis Cardinals and most recently (1973-77) with the Oakland Raiders. He has also coached baseball and football with the Amador, California High School in 1978. He is an active member of the Fellowship of Christian Athletes. Coach Shinnick is married and is the father of five sons.



AND THE ASSISTANT COACH:

Don Kistler is a graduate of Azusa Pacific College in California. He is 30 years old and has coached for 7 years on the High School level in California and Illinois. He also served as Defensive Line Coach for Azusa Pacific in 1976. Coach Kistler is a very active member of the fellowship of Christian Athletes.



Clatworthy's Ready Wear



Fayette, Missouri

EIGHT LANES BOWLING

Finest AMF Equipment

**Open Bowling Friday and Saturday Nights
7:30 to 11:00 P.M.**

**ASK ABOUT CMC STUDENT DISCOUNT
We Furnish Everything**



**AVAILABLE WEDNESDAY EVENINGS FOR PARTIES
FAYETTE BOWLING LANES**

**Four Blocks
From Campus
South Main St., Fayette**

**Johnny Tippet
& Wayne Carr
Tel. 248-3330**



Billy McNeal



Charles Irby

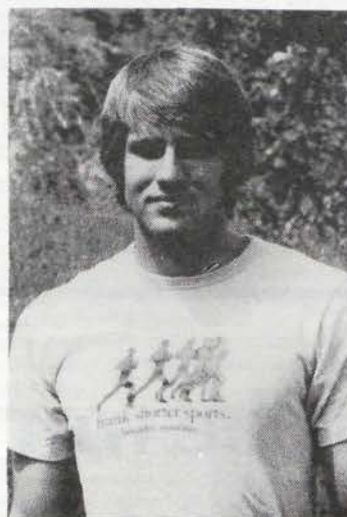


Scott Sisson



ASSISTANT COACHES

Front Row: Gene Williams **Second Row:** Mark Gassman, Ken Ash, and Tim Kistler



Steve Spotts



Gene Kreider



Danny Kesselring



Kevin Austene



Kathy Johnson is in her second season as trainer for the CMC Athletic Program. Prior to becoming a trainer at CMC, Kathy was a member of the University of Missouri Training staff. She began her training career during her second year of high school. At this time, she attended her first Cramer's Trainer's camp. She has attended several classes on athletic first-aid and several training clinics.

AYRES DRY GOODS COMPANY

FOR YOUR CLOTHING
NEEDS . . .

Bib Overalls Flannel Shirts
Maverick Jeans & Jackets
Ely & Walker
Washington DeeCee
Katz Flannel Sleepwear

Wm. V. Ayres ex '56

Open 8 a.m. — 5 p.m. Mon.-Sat.

SE Corner Square

816-248-3365



MORRISON & CHURCH STREETS
FAYETTE, MISSOURI 65248
PHONE: 816 - 248-3354

400 EAST SPRING STREET
BOONVILLE, MISSOURI 65233
PHONE: 816 - 882-7476



OFFICES IN BOONVILLE AND FAYETTE MISSOURI
HOME OFFICE — BOONVILLE, MISSOURI

HISTORIC SITE - OF SALT LICK
USED BY DANIEL BOONE AND
EARLY PIONEER SETTLERS

**Quality Clothing
For Men and Women
Levi — Jantzen
Pacific Trail
Formal Wear Rental**

Keith's

South Side of Square

248-2183

Miller's IGA Foodlane

**U.S. Choice Meats
Natures Best Produce
On the Square**



248-3275

Fayette, Mo.

McMILLAN'S CAFE

DUDE McMILLAN
Honorary C Club Member

**112 South Main St.
Fayette, Missouri**

**Pennzoil and Quaker State
Motor Oils**

**Sporting Goods • Metric Tools
Auto Accessories and Supplies**



Joe Turner
107 N. Main

Jeff Schuermann, '81
East Side Square

Open 8 a.m. — 5 :30 p.m. Mon.-Sat.



Charles Krueger



Mike Rasmussen



Marty Harral



Mark Starkey



Lynol Bremer



David Dinsmore



Ted Pettibone



Larry Layden



Mike Berry

PREVIEW OF THE 1979 SEASON

The number of key personnel that were lost from the 1978 Eagles squad was exceptionally high. With the loss of the two All-Americans Tom Stine and Steve Luetjen and with other outstanding players - Gene Williams, Don Bagby, Brian McMillan, Andy Stoll, and Dale Mason the 1979 season will have to be a year for rebuilding purposes.

Coach Shinnick believes in teaching the techniques of the game and finding the right position for the right player. He is a great believer in first teaching his players to know what they are doing.

Coach Shinnick thinks that with the personnel returning the Eagles could surprise a few people and with the help of the student body, faculty, cheerleaders, towns people and alumni he believes that the Eagles will put on a pretty good show.



SENIORS

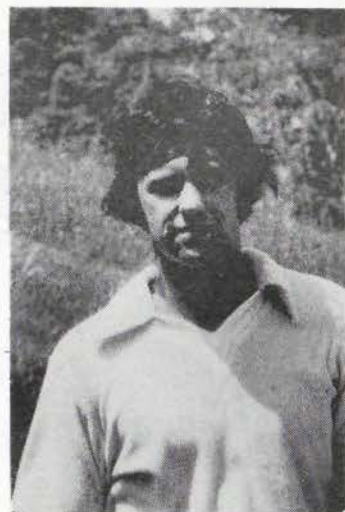
Back Row: Frank Gentile, Bob Fowler, Tom Beauchamp, Mark Bubash and Joe Borghart. Front Row: Mark Starkey, Dave Almany, Erick Trelz, Tavale Masalosalo and Chris Jenkins.



Mark Carrington



Rick Ford

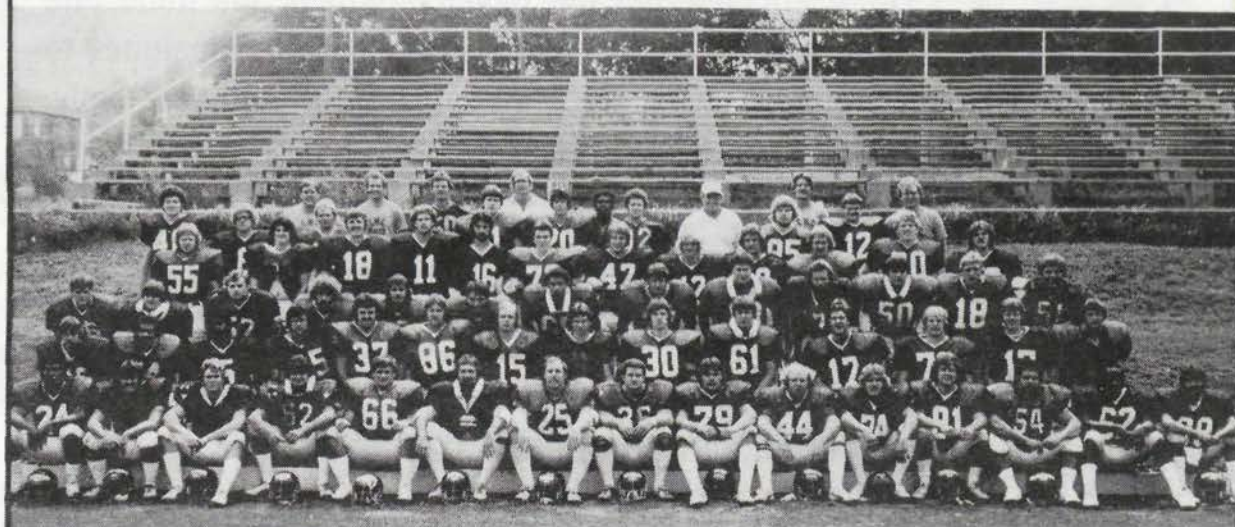


Bob Leonard

CENTRAL METHODIST COLLEGE JUNIOR VARSITY FOOTBALL SCHEDULE

DATE	OPPONENT	TIME	PLACE
Sept. 11	Univ. MO-Rolla	3:00 P.M.	Home
Sept. 16	SE Missouri State at Crystal City	2:00 P.M.	Away
Oct. 15	Missouri Valley	7:00 P.M.	Away
Oct. 22	Central Missouri State	7:00 P.M.	Away

1979 CENTRAL METHODIST COLLEGE EAGLES FOOTBALL TEAM



(Read from left to right) **Front Row:** Wilbert Peebles, Mark Turney, Bill Richey, Leon Nick, Mark Bubash, Frank Gentile, Jerry McMillan, Joe Borghardt, Jeff Holloway, Bob Fowler, Marty Harrell, Keith Vinyard, Tavale Masalosalo, Mike Houston, Glen Greig. **Second Row:** Gene Kreider, Gerard Martin, Charles Irby, Bob Leonard, Dave Albany, Tim Mills, Eric Trelz, Tony Livingston, Lynol Bremer, Roy Bainter, Dave Dinsmore, George Sitterly, Kevin Austene, Kirk Meyer. **Third Row:** Charles Krueger, Tim Mills, Tod Drennan, Wayne Dick, Mark Loge, T.J. Ferlita, Gerald Martin, Vance Powell, Kevin Roberts, Mark Carrington, Leo Dennin, Larry Layden, Dick Hutchinson. **Fourth Row:** Ted Pettibone, John Temperato, Mike Rasmussen, Danny Kesselring, Tony Smerker, Mike Berry, Steve Spotts, John Honey, Mark Starkey, Craig Brown, Tom Beauchamp, Rick Ford. **Fifth Row:** Bill Elmendorff, Billy McNeal, Joe Innes, Alan Grieg, Chris Jenkins, Scott Sisson, David Ross. **Sixth Row:** Don Kistler, Bruce Bickell, Gene Williams, Ken Ash, Don Shinnick, Tim Kistler, Mark Gassman.

CENTRAL METHODIST COLLEGE

Highlights

Central Methodist College, a fully accredited four-year degree granting coeducational college, is located in Fayette, Missouri. With emphasis on the liberal arts and sciences, the curriculum offers the student an opportunity to achieve a liberal education plus the specialized knowledge related to a particular area.

Established in 1854, Central Methodist College is proud to serve as the only United Methodist College in the state. CMC is non-sectarian in its admissions and educational programs.

The basic aims of the institution are to promote and advance learning in all branches. While encouraging the development of the mind, the college attempts to provide the means and instrumentalities designed to exercise wholesome moral and religious influence on the student body.

SURE, WE'LL PUBLISH YOUR FAMILY TREE

- . . . or local history,
- . . . or any original book or booklet.

No minimum number of copies.
Ask for an estimate at no obligation

WOOD CREEK

Book Binders

202 E. Morrison
Fayette, MO 65248

H. Denny Davis ex '48
Phone: 816-248-5223

Open 8 a.m. — 5 p.m. Mon.-Fri.

HEART OF AMERICA ATHLETIC CONFERENCE MEMBERS

BAKER UNIVERSITY

Location: Baldwin City, KS
 Nickname: Wildcats
 President: Jerald C. Walker
 Athletic Director: James Irick
 Football Coach: Joe Girardi
 Basketball Coach: Hugh Howard
 Baseball Coach: Keith Hackett
 Tennis Coach: Jim Irick
 Golf Coach: Karl Spear
 Bowling Coach: Phil Barnhouse

CENTRAL METHODIST COLLEGE

Location: Fayette, MO
 Nickname: Eagles
 President: Joe Howell
 Athletic Director: James Luetjen
 Football Coach: Don Shinnick
 Basketball Coach: Ken Ash
 Soccer Coach: Dang Pibulvech
 Cross Country: Ken Burres
 Baseball Coach: Don Shinnick
 Track Coach: Don Kistler
 Tennis Coach: Dang Pibulvech
 Golf Coach: Ken Ash

CULVER-STOCKTON COLLEGE

Location: Canton, MO
 Nickname: Wildcats
 President: Harold Doster
 Athletic Director: Leland Beck
 Football Coach: Jerry Maulin
 Basketball Coach: Gene Hall
 Track Coach:
 Baseball Coach: Jerry Maulin
 Tennis Coach: Russ Glasgow
 Golf Coach:

GRACELAND COLLEGE

Location: Lamoni, Iowa
 Nickname: Yellowjackets
 President: Frank Hough
 Athletic Director: Bill Dudeck
 Football Coach: Bill Dudeck
 Basketball Coach: Tom McCracken
 Baseball Coach: Bill Dudeck
 Tennis Coach: Mike Foster
 Golf Coach: Roy Benson
 Wrestling Coach: Gerald Hampton
 Cross Country: Bill Russell

MID-AMERICA NAZARENE COLLEGE

Location: Olathe, KS
 Nickname: Pioneers
 President: R. Curtis Smith
 Athletic Director: Ron Hill
 Football Coach: G. DeGraffenried
 Basketball Coach: Jim Smith
 Track Coach: G. DeGraffenried
 Baseball Coach: Ron Hill
 Tennis Coach: Gerald Reed
 Golf Coach: John Clark
 Cross Country: Jim Coburn

MISSOURI VALLEY COLLEGE

Location: Marshall, MO
 Nickname: Vikings
 President: Donald C. Ziemke
 Athletic Director: Ken Gibler
 Football Coach: Ken Gibler
 Basketball Coach: Quentin King
 Track Coach: Ken Gibler
 Baseball Coach: Neil Pittman
 Golf Coach: Grover Redford

OTTAWA UNIVERSITY

Location: Ottawa, KS
 Nickname: Braves
 President: Robert Shaw
 Athletic Director: Bill Boucek
 Football Coach: Nyle Salmans
 Basketball Coach: Dan Gunkel
 Track Coach: Bill Boucek
 Golf Coach: Fred Zook
 Cross Country: Bill Coucek
 Soccer: Paul McNally

TARKIO COLLEGE

Location: Tarkio, MO
 Nickname: Owls
 President: Frank Bretz
 Athletic Director: Bonnie Marrow
 Football Coach: Ralph Micheli
 Basketball Coach: Chris Ragsdale
 Cross-Country Coach: Channing Cox
 Track Coach: Robert Tucker

WILLIAM JEWELL COLLEGE

Location: Liberty, MO
 Nickname: Cardinals
 President: Thomas Field
 Athletic Director: Larry Hamilton
 Football Coach: Stan McGarvey
 Basketball Coach: Larry Holley
 Track Coach: Darrel Gourley
 Baseball Coach: Fred Flook
 Tennis Coach: James Nelson



Gerald Martin



Roy Bainter



Wilbert Peebles

CENTRAL METHODIST COLLEGE 1979 FOOTBALL ROSTER

NO.-NAME	HT	WT	POS	YR	HOMETOWN
1-Loge, Mark	5-11	175	DB	FR	Hillsboro, MO
7-Hutchinson, Dick	6-1	200	LB	FR	Versailles, MO
10-Brown, Craig	6-2	185	QB	FR	Denton, TX
12-Ross, David	5-9	165	DB	SO	Independence, MO
14-Jenkins, Chris	5-10	188	DB	SR	St. Louis, MO
15-Dinsmore, Dave	6-1	175	B	SO	Denver, CO
16-Hobbs, Craig	5-8	154	DB	FR	Haskell, OK
17-Almany, Dave	6-1	175	K	SR	Crystal City, MO
19-Layden, Larry	6-1	175	QB	FR	Independence, MO
20-Dremer, Lynol	5-11	185	B	SO	Syracuse, MO
21-Gambill, Tim	5-9	193	B	SO	High Ridge, MO
24-Ford, Rick	5-11	170	DB	JR	St. Louis, MO
25-Livingston, Tony	5-9	167	B	SO	Peculiar, MO
26-Elmendorf, Bill	5-7	160	DB	SO	St. Charles, MO
27-Peebles, Wilbert	6-0	200	B	FR	Kinloch, MO
28-Honey, John	5-11	156	DB	JR	Huntsville, MO
30-Pettibone, Ted	5-9	165	B	FR	Hillsboro, MO
31-Spotts, Steve	6-0	183	DB	FR	Huntsville, MO
32-Borghart, Joe	6-0	200	LB	SR	Fulton, MO
33-Starkey, Mark	5-10	170	DB	SR	Fontenac, MO
34-Irby, Charles	5-8	164	DB	FR	Memphis, TN
35-Greig, Alan	5-11	187	B	SO	Pacific, MO
36-Innes, Joe	6-2	195	B	SO	Fayette, MO
40-Austene, Kevin	6-0	171	DB	FR	Hallsville, MO
41-Ballard, Bill	5-11	190	DB	FR	Tampa, FL
44-Kelley, Terry	6-0	180	K	SR	Boonville, MO
45-Leonard, Bob	5-11	175	DB	SR	St. Louis, MO
46-McMillan, Jerry	6-0	207	B	SO	Fayette, MO
49-Martin, Gerald	6-1	160	DB	FR	Denver, CO
50-Nick, Leon	6-0	185	LB	SO	Miami, FL
51-Juliam, Gerald	6-1	198	LB	FR	Independence, MO
52-Drennan, Todd	6-0	197	LB	JR	Columbia, MO
54-Masalosalo, Tavale	5-10	220	DL	SR	Honolulu, HI
55-Jaramillo, Louis	5-11	185	LB	FR	Miami, FL
56-Houston, Mike	6-0	206	DL	SO	Warrenton, MO
60-Roberts, Kevin	6-1	200	OL	SO	Moberly, MO
61-Temperato, John	6-0	206	OL	JR	Crystal City, MO
62-McNeal, Billy	5-10	215	L	FR	Tipton, MO
63-Bubash, Mark	5-10	220	OL	SR	St. Louis, MO
64-Gentile, Frank	6-1	223	LB	SR	Wentzville, MO
65-Turney, Mark	5-9	190	LB	SO	St. Louis, MO
66-Richey, Bill	5-11	195	OL	SO	Creve Coeur, MO
67-Krueger, Charles	6-0	180	OL	SO	O'Fallon, MO
68-Dennis, Leo	6-1	200	OL	SO	High Ridge, MO
69-Fowler, Bob	5-9	193	OL	SR	Louisiana, MO
70-Mills, Tim	6-3	198	DL	SO	Melbourne, FL
71-Rasmussen, Mike	6-2	200	OL	SO	Hillsboro, MO
72-Sitterley, George	5-8	190	OL	SO	Jefferson City, MO
73-Kesselring, Danny	6-2	207	DL	FR	Potosi, MO
74-Bainter, Roy	6-1	185	OL	SO	St. Louis, MO
75-Hedrick, Andy	6-1	240	OL	SO	Wentzville, MO
77-Beauchamp, Tom	6-0	225	DL	SR	Hillsboro, MO
78-Sisson, Scott	6-1	230	K	SO	Pacific, MO
79-Holloway, Jeff	6-1	235	OL	JR	St. Charles, MO
80-Martin, Gerard	5-11	151	R	FR	Denver, CO
81-Ferlita, T.J.	6-2	205	R	FR	Tampa, FL
82-Trelz, Eric	5-10	175	R	SR	St. Louis, MO
83-Meyer, Kirk	6-0	150	R	FR	Nevada, MO
84-Harral, Marty	6-0	155	R	JR	Fairgrove, MO
85-Henderson, Terry	6-3	164	R	FR	Haskell, OK
86-Billingsley, Jon	6-1	223	R	FR	Denver, CO
87-Vinyard, Keith	6-0	200	R	SO	Festus, MO
88-Greig, Glenn	5-9	145	R	SO	Pacific, MO
89-Dick, Wayne	6-0	170	R	FR	Hillsboro, MO
Berry, Mike	5-11	183	OL	FR	Salisbury, MO
Carrington, Mark	5-11	165	DB	SO	Columbia, MO
Collins, Mark	6-5	240	DL	FR	Wentzville, MO
Kreider, Gene	5-9	155	DB	FR	Palmyra, MO
Powell, Vance	5-11	200	OL	SO	Wentzville, MO



Coke adds life to...
Trade-mark ©
FOOTBALL



WILLIAM JEWELL COLLEGE 1979 VARSITY FOOTBALL ROSTER

NO.-NAME	POS	YR	HT	WT	HOMETOWN
3-Al Garcia	K	SR	5-7	140	Kansas City, MO
5-Tom Boyd	WO	SR	6-0	175	Lee's Summit, MO
7-Mark Capra	QB	SR	6-3	190	Kansas City, MO
9-Tom Cannelax	QB	FR	6-2	170	Fair Grove, MO
10-Kelly Groom	QB	FR	6-0	150	LaGrange, MO
12-Robbie Vaughn	QB	FR	6-0	175	Pleasant Hill, MO
14-Larry Pleus	QB	FR	6-2	190	Jefferson City, MO
15-Marc Hill	QB	FR	5-11	175	Unionville, MO
16-Wendell McGill	OLB	SO	5-11	190	Caruthersville, MO
17-Steve Hobick	WO	JR	6-0	165	Cleveland, MO
18-John Strough	QB	FR	6-0	185	Tonawanda, NY
19-Mark Hill	QB	FR	5-11	175	Unionville, MO
20-Larry Bruns	S	JR	6-0	175	St. Clair, MO
21-Barry Bowman	WO	FR	5-10	150	Creve Coeur, MO
22-Larry Gant	RB	FR	5-10	165	Independence, MO
23-Vic Davolt	RB	SO	5-9	175	Rolla, MO
24-Chad Hammond	RB	FR	5-8	180	Graham, TX
25-David Cunningham	RB	JR	6-2	200	Louisiana, MO
26-David Rende	WO	FR	5-11	160	Tonawanda, NY
27-Rob Schermerhorn	WO	SR	5-8	150	Great Mills, MO
28-Rodd Burnidge	RB	FR	5-10	185	North Kansas City, MO
29-Ed Norris	DB	FR	6-0	170	Jerseyville, IL
30-Cary Stronach	CB	FR	5-9	160	Hickman Mills, MO
31-Jack Stasi	DB	SR	5-10	170	Kansas City, MO
32-Alvin Robertson	DB	FR	6-0	180	Pleasanton, KS
33-Kevin Sternitzky	DB	JR	5-8	170	Overland Park, KS
34-Brook Boehmler	RB	FR	6-1	185	Montgomery City, MO
35-Brad Gans	DB	SO	6-0	185	St. Louis, MO
36-David Bullock	LB	SR	5-9	180	St. Louis, MO
37-Jerry Burchett	LB	FR	5-9	175	Freeman, MO
38-Tim Nowka	LB	FR	6-3	200	N. Tonawanda, NY
39-David Armstrong	DB	FR	6-0	175	Wood River, IL
40-Mark Cline	RB	JR	5-11	190	St. Peters, MO
41-Ed Wachter	ILB	FR	5-10	180	St. Clair, MO
42-Kraig Broecker	RB	FR	5-8	180	N. Tonawanda, NY
43-Mark Dominey	OLB	FR	6-0	185	Shawnee Mission, KS
44-Greg Wade	ILB	FR	6-0	195	Ferguson, MO
45-Doug Switzer	DB	FR	5-10	175	Chillicothe, MO
46-Kevin Nail	WO	FR	5-8	160	Guthrie, OK
47-James Merrell	DB	SR	5-10	180	Blue Springs, MO
48-Mark Timmerberg	OLB	SO	6-0	180	Montgomery City, MO
49-Rob Arnold	OLB	FR	6-2	220	Kansas City, MO
50-Ed Place	NG	SO	5-10	195	Bethany, MO
51-Greg Embree	OT	FR	6-0	190	Blue Springs, MO
52-Dennis Carter	LB	SR	5-11	200	Liberty, MO
54-Doug Boyd	T	FR	6-0	260	Caruthersville, MO
55-Dennis Williams	C	SR	6-1	225	Raytown, MO
56-Steve Mattingly	ILB	FR	6-0	205	St. Louis, MO
57-Tim Lightner	C	FR	6-1	210	Chillicothe, MO
58-Dennis Bigham	OLB	FR	6-0	180	Tonawanda, NY
59-Danny Carter	ILB	SR	5-11	200	St. Clair, MO
60-Mike Schmidt	OG	SO	5-11	205	Kansas City, MO
61-Steve Penick	OL	FR	6-0	195	North Kansas City, MO
62-Chuck Pennewell	NG	JR	5-8	185	Louisiana, MO
63-Jim Tubbs	NG	FR	6-2	200	Portageville, MO
64-Mike Hogan	OG	SR	6-0	185	Independence, MO
65-Wayne Schmidt	DL	SO	6-2	200	N. Tonawanda, NY
66-Randy Wepler	OT	SR	6-5	240	Liberty, MO
67-Gary Ainsworth	OLB	SO	6-1	205	Boonville, MO
68-Guy Weber	OG	FR	6-0	215	Hillsboro, MO
69-Steve Spencer	OG	JR	5-10	220	Raytown, MO
70-Greg Hicks	OT	JR	5-10	220	Fair Grove, MO
71-Ted Graves	OT	FR	6-1	230	Fairfax, MO
72-Jim Koch	ILB	SO	6-0	200	Maryland Heights, MO
73-Don Brown	T	FR	6-1	225	Clinton, MO
74-Lonnie Bruns	OT	FR	6-3	210	St. Clair, MO
75-Troy Shaw	OT	SO	5-10	200	Kearney, MO
77-Chris Choice	OLB	JR	6-1	180	O'Fallon, MO
78-Pat Burke	NG	JR	6-1	220	Excelsior Springs, MO
79-Sid Silvey	OT	SR	6-4	210	Liberty, MO
80-Chuck Williams	TE	FR	6-2	190	Jennings, MO
81-John Haase	TE	SO	6-1	180	Lonedell, MO
82-Dwight Fay	TE	SO	6-3	185	Centralia, MO
83-Marty Hensley	WO	SO	5-11	165	Jefferson City, MO
84-Scott Martin	TE	FR	6-1	200	Hickman Mills, MO
85-Brian Turner	WO	FR	5-9	170	Moberly, MO
86-Jim Sheridan	P	FR	6-0	160	Tonawanda, NY
87-Jeff Gourley	TE	FR	6-1	200	Liberty, MO
88-John Sivigliano	WO	SR	6-2	185	Kansas City, MO
89-Jeff Cain	WO	SO	6-2	180	Kansas City, MO
90-Doug Henderson	DL	FR	6-3	210	North Kansas City, MO
91-Chuck Foley	DL	FR	6-1	215	Graham, TX
92-Ralph Yeater	DL	FR	6-3	210	North Kansas City, MO
94-Greg Jacobson	WO	FR	6-0	180	Kansas City, MO

FOOTBALL OFFICIALS

Robert Clodfelter Referee
Jack Richardson Umpire
Robert Chiles Head Line
Ray Perez Line Judge
Ken Morganstern Back Judge



*Coca-Cola and Coke are registered trade-marks which identify the same product of The Coca-Cola Company.

THIS YEAR'S OPPONENTS

BENEDICTINE COLLEGE

Date: Sept. 8, Away 7:30 p.m.
Location: Atchinson, KS
Enrollment: 955
Affiliation: NAIA Independent
Nickname: Ravens
Head Coach: Larry Wilcox
Last Year's Results: CMC 29 Benedictine 12

WILLIAM JEWELL COLLEGE

Date: Oct. 20 Home 1:30 p.m.
Location: Liberty, MO
Enrollment: 1450
Affiliation: NAIA (HAAC)
Nickname: Cardinals
Head Coach: Stan McGarvey
Last Year's Results: CMC 32
William Jewell 29

CULVER-STOCKTON COLLEGE

Date: Sept. 22 Home 1:30 p.m.
Location: Canton, MO
Enrollment: 600
Affiliation: NAIA (HAAC)
Nickname: Wildcats
Head Coach: Jerry Maulin
Last Year's Results: CMC 37 Culver-Stockton 21

GRACELAND COLLEGE

Date: Oct. 27 Away 1:30 p.m.
Location: Lamoni, IA
Enrollment: 1325
Affiliation: NAIA (HAAC)
Nickname: Yellowjackets
Head Coach: William Dudeck
Last Year's Results: CMC 35 Graceland 15

OTTAWA UNIVERSITY

Date: Sept. 29 Away 1:30 p.m.
Location: Ottawa, KS
Enrollment: 600
Affiliation: NAIA (HAAC)
Nickname: Braves
Head Coach: Nyle Salmans
Last Year's Results: CMC 57 Ottawa 33

UNIVERSITY OF MISSOURI-ROLLA

Date: Nov. 3 Away 1:30 p.m.
Location: Rolla, MO
Enrollment: 4900
Affiliation: NCAA (MIAA)
Nickname: Miners
Head Coach: Charles Finley
Last Year's Results: CMC 17 Rolla 52

BAKER UNIVERSITY

Date: Oct. 6 Away 7:30 p.m.
Location: Baldwin City, KS
Enrollment: 900
Affiliation: NAIA (HAAC)
Nickname: Wildcats
Head Coach: Joe Girardi
Last Year's Results: CMC 38 Baker 62

TARKIO COLLEGE

Date: Nov. 10 Home 1:30 p.m.
Location: Tarkio, MO
Enrollment: 500
Affiliation: NAIA (HAAC)
Nickname: Owls
Head Coach: Ralph Micheli
Last Year's Results: CMC 33 Tarkio 14

MISSOURI VALLEY COLLEGE

Date: Oct. 13 Home 2:00 p.m.
(Homecoming)
Location: Marshall, MO
Enrollment: 500
Affiliation: NAIA (HAAC)
Nickname: Vikings
Head Coach: Ken Gibler
Last Year's Results: CMC 8 Missouri Valley 42

Scrumptillyishus!

Brazier* Foods and Dairy Queen Treats

John & Sandy Smith

Highway 5

Fayette, Missouri



*Reg. U.S. Pat. Office Am. DQ Corp.
Copyright 1977, Am. DQ Corp. Mpls. Minn.

From S-Hooks to Shelving
See our selection of room decorating ideas
That conform to dormitory regulations

—●—
GIFTS AND SPORTING GOODS
—●—

We have clear plastic sheeting with peel off
back to protect your music & books

FAYETTE
True Value
NATION'S LARGEST HARDWARE CHAIN ...

Bob & Jane Weiland
NE Corner of Square

MOTT'S JEWELRY AND GIFT SHOP

Come and browse our outstanding selection of

**ONYX - JADE - OPAL
STAR SAPPHIRES
CAMEOS**

with or without diamond setting

Open 8 a.m. to 5 p.m. Mon.—Sat.

North Side of Square
Tel. 816-248-2180

John R. Mott Honorary C Club Member

- We Feature
- Pro-Keds Athletic Shoes
 - Converse Athletic Shoes
 - Connie Dexter
 - Easy Street
 - Red Wing Work Shoes
 - Nocona Western Boots

**FAYETTE
SHOES**
Your One Stop Family Shoe Store

Open 8 a.m.-5:30 p.m. Mon.-Sat.

North Side of Square
LARRY SMITH

248-3173
NADINE WELLS

DEGREES OFFERED AT CENTRAL METHODIST COLLEGE

Degree programs are offered in both two and four year programs. Majors and Concentrations are available in these areas:

FOUR-YEAR DEGREE PROGRAMS:

Accounting
Administration
Art
Astronomy
Biology
Business Education
Chemistry
Economics
Elementary
Education
English
History and Political
Science
Mathematics
French
German
Spanish

Music Education
Music History and
Theory
Music Performance
Philosophy
Physical Education
Physics
Pre-Medical
Psychology
Religion
Sociology
Social Work
Speech & Dramatic
Arts
{ Modern
Languages
& Literature

TWO-YEAR PROGRAMS:

English (Writing Option)
Medical Laboratory
Technician
Nursing
Secretarial Science

GOOD LUCK EAGLES

KLINE INSURANCE AGENCY

124 E. Morrison
Fayette, MO
Ph. 248-3322

MEYER INSURANCE AGENCY

515 First St.
Glasgow, MO
Ph. 338-2021



Howard County's Only Independent Agencies

Auto • Home • Farm • Commercial • Life and Health Insurance
We Don't Work for Just One Company, We Work for You



Kevin Roberts



Dave Almany



Jeff Holloway



Mark Bubash



Todd Drennan



Tavale Masalosalo



Bob Fowler



Frank Gentile



Eric Trelz



Leo Dennis



Bill Richey



Gerard Martin



Kirk Meyer



Vance Powell



Gerald Julian



Tony Smreker



Dick Hutchinson



John Temperato

Alsop & Graham Pharmacy



Full Fountain
and
Lunch Counter Service

Dale Graham

East Side of Square 111 Main St.
248-3362 Fayette

Sandy's Flowers and Gifts



*Cut Flowers
Handmade Gifts*

Easy-to Mail gifts for all ages

Open 8 a.m. — 5 p.m. Mon-Sat

248-3128

South Main Street

Sandy Lutz

Debby Lutz

COUNTRY PLACE

Monday - Saturday
7 AM - 12 Midnight
Sunday
7 AM - 10 PM

GROCERIES, SANDWICHES,
GAS, ICE COLD BEVERAGES

248-2287

Hwy. 5 & 240 N.

Fayette, Mo.

HOME OIL CO. Wholesale & Retail

Complete Car Servicing

Linn & Morrison
248-3355

Church & Davis
248-3900

FAYETTE, MISSOURI

COMMERCIAL TRUST COMPANY

FAYETTE, MISSOURI 65248

TELEPHONE (816) 248-2222



L.W. JACOBS, JR., PRESIDENT CMC '19
W.J. TURNAGE, VICE PRESIDENT CMC '39
L.W. JACOBS III, VICE PRESIDENT CMC '52
MARK HARBISON, SECRETARY CMC '76

Each depositor insured to \$40,000





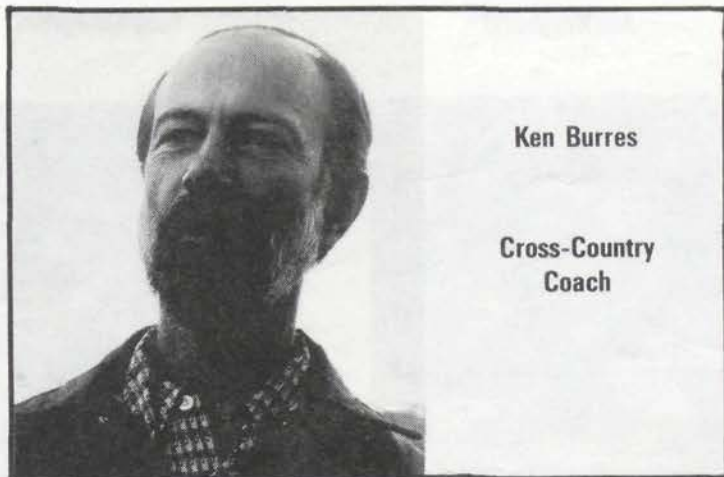
Mark Turney



Tim Mills



Tim Gambill



Ken Burres

**Cross-Country
Coach**



Craig Brown

Watch for the Eagles cross-country team to improve on their performance of last year, which landed them in third place in the Heart of America Conference. Five runners return, including sophomore Keith Shostrom of Urbandale, Iowa, who was last year's top runner, taking fifth in the conferences and turning in an excellent 26:02 five-mile performance in his best race. Other returnees who should be much stronger this year are Rob Baker, John Criner, Keith Small, and Brad Rupert. New faces this fall are Brett Hawkes, a fine high school miler from Fayette, and Curtis McDowell, Missouri State 2A high school half-mile champion this spring from Plattsburg, with an outstanding 1:56.5 clocking. Home fans can watch the Eagles face a challenging field from UM-Rolla, Lincoln, Westminster, Southwest Baptist, and Baker at the CMC Invitational at the Fayette Golf Course on Saturday, October 13, 11:30 a.m.

CENTRAL METHODIST COLLEGE CROSS-COUNTRY SCHEDULE 1979

DATE	OPPONENT	PLACE	TIME
Sept. 7	Park College	Away	5:00 p.m.
Sept. 15	Washington University	Away	11:00 a.m.
Sept. 22	Mid-America Nazarene College	Away	11:00 a.m.
Sept. 28	Missouri Intercollegiate	Away	5:30 p.m.
Oct. 6	Univ.-MO-Rolla	Away	10:30 a.m.
Oct. 13	CMC Invitational	Home	11:30 a.m.
Oct. 20	Lincoln University	Away	10:30 a.m.
Oct. 26	Heart of America Conference	Away	2:00 p.m.
Nov. 2	NAIA District 16	Away	2:00 p.m.
Nov. 17	NAIA National Championships	Away	11:00 a.m.



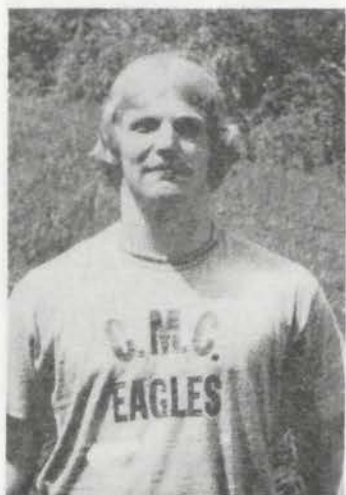
Leon Nick



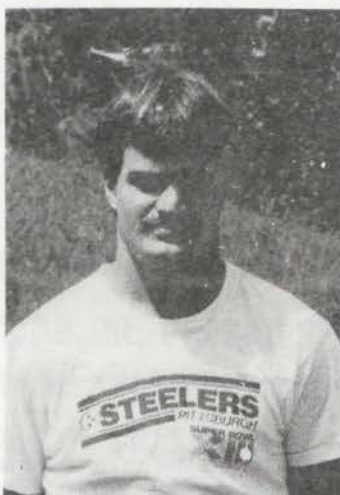
Joe Borghardt



Tony Livingston



George Sitterley



David Ross



Jerry McMillan



John Honey



Alan Greig



T.J. Ferlita



Glen Greig



Mike Houston



Bill Elmendorf



Keith Vinyard



Chris Jenkins



Joe Innes



Tom Beauchamp



Mark Loge



Wayne Dick

CENTRAL METHODIST COLLEGE VOLLEYBALL SCHEDULE 1979

DATE	OPPONENT	TIME	PLACE
Wed. Sept. 12	William Woods	6:30 p.m.	Fulton, MO
Wed. Sept. 19	Stephens College		
	SW Baptist vs. CMC	6:00 p.m.	Fayette, MO
	NE Mo State vs. SW Baptist	7:00 p.m.	
Fri. Sept. 21	CMC vs. NE MO State		Fayette, MO
	Drury College	7:00 p.m.	Columbia, MO
Wed. Sept. 26	MU Jr. Varsity	6:30 p.m.	
Sept. 28-29	Evangel - Drury Tournament		Fayette, MO
Tue. Oct. 2	Columbia College vs. CMC	6:00 p.m.	
	Lincoln vs. Columbia College	7:00 p.m.	
	CMC vs. Lincoln University	8:00 p.m.	Fayette, MO
Fri. Oct. 5	School of Ozarks vs. CMC	6:00 p.m.	
	Avila Vs. School of Ozarks	7:30 p.m.	
	CMC vs. Avila College	8:30 p.m.	Marshall, MO
Wed. Oct. 10	Missouri Valley vs. Evangel	6:00 p.m.	
	Evangel vs. CMC	7:00 p.m.	
	CMC vs. Missouri Valley		Kansas City,
Tue. Oct. 16	Avila College	6:30 p.m.	
	Missouri Western		Fayette, MO
Thu. Oct. 18	Culver-Stockton vs. CMC	6:00 p.m.	
	Wm. Woods vs. Culver-Stockton	7:00 p.m.	
	CMC vs. Wm. Woods College	8:00 p.m.	Fayette, MO
Sat. Oct. 20	William Jewell College	11:00 a.m.	Fayette, MO
Oct. 22-23	HAAC Tournament		Fayette, MO
Fri. Oct. 26	Washington U. vs. CMC	6:00 p.m.	
	MO Valley vs. Washington U.	7:00 p.m.	
	CMC vs. MO Valley		Columbia, MO
Tue. Oct. 30	Stephens College	7:00 p.m.	
Nov. 2-3	State Tournament		
Nov. 10	K.U. Tournament		



Head Volleyball Coach: Phyllis Richardson

1979 VARSITY SOCCER SCHEDULE CENTRAL METHODIST COLLEGE

DATE	OPPONENT	TIME	PLACE
Sept. 5	Northeast Mo. State U.	3:30	Home
Sept. 8	Lewis University	2:00	Away
Sept. 14	Hardin-Simmons University	4:00	Away
Sept. 15	Austin College	2:00	Away
Sept. 19	Maryville College	3:30	Away
Sept. 21	Missouri Southern College	7:30	Away
Sept. 25	Rockhurst College	3:00	Home
Oct. 3	Lindenwood College	3:30	Home
Oct. 5	Washington University	6:00	Away
Oct. 10	Harris Stowe College		
Oct. 10	Harris Stowe College	3:30	Away
Oct. 12	Westminster College	3:00	Home
Oct. 20	William Jewell College	11:00 AM	Home
Oct. 23	Avila College	3:00	Home
Oct. 27	Principia College	1:00	Home
Nov. 5	Ottawa University	2:30	Away
TBA	"Richard Walls Annual Cup"		
	University of Missouri, Columbia		Away
TBA	NAIA District 16 Playoffs		
TBA	NAIA Area 2 Playoffs		
TBA	NAIA National Championship Tournament		



Dang Pibulvech

DAVE'S UNITED SUPER

**Quality Meats
Freshest Produce**

**Your Full Service
Grocery Store**

CMC BOOSTER
Phone 248-3328
Fayette, Missouri

DONNELLY MOTORS



Phone: 816-248-3301
Hwy. 5 & 240, North
Fayette, Missouri 65248

D and H Prescription Drug Store

**Russell Stover Candies
Hallmark Cards**



**Phone 816-248-2275
North Side of Square
Fayette, Mo. 65248**

PROMPT DRY CLEANING SERVICE

Usually we can have your cleaning ready
in 24 to 36 hours

**SUEDE AND LEATHER GARMENTS
EXPERTLY CLEANED**

Adco Dry Cleaning and
Mothproofing Products Used

MODERN CLEANERS

Open Mon.-Fri. 8 a.m. - 5 p.m.
Saturdays 9 a.m. to noon
203 N. Church 248-2164

Wayne Pruett
Betty Pruett
Mark Pruett



RETURNING CHEERLEADERS

Front Row: (left to right) Sharon Miller, Michelle Schaber and Debbie Engelmann. **Back Row:** Nancy Walker, Laura Thrasher and Melissa Knauer.



RETURNING POM PONS

Front Row: (left to right) Beth McKune, Cheryl McLean and Sue Clark. **Back Row:** Laura Sebastian and Teri Blair.

Saga

**THE
EDUCATIONAL
DIVISION**

Wild & Crazy Pizza

Fayette, Mo.

COUPON SPECIALS

\$2.00 Off a Big Top

Everything Pizza

Not good w/other coupon

**Buy any Large Pizza
& Get a Pitcher of Soda for**

10¢

Not good w/other coupon

ALMA MATER OF CENTRAL METHODIST COLLEGE

Amid the mystic shades of eve at nightfall,
Across horizons where thy fair light falls,
Thy tow'rs arise --
Ennobled spires of all the years
That bless thy name, our Alma Mater.

Through years of toil and comradeship together,
'Mid friendly scenes and spirited endeavor,
Fearless and free --
With loyalty we've lived for thee,
Central, for thee, our Alma Mater.

Unto these last of college days together,
With mingled thoughts of distant days that sever,
Strong in thy faith --
Our hope and heart we pledge to thee,
Central, to thee, our Alma Mater.

Words by Bernard E. Meland

FIGHT SONG

Hail victory, to the we sing our loudest praise
Hail Green and Black the banner we so proudly raise
Hail victory, --- to the we give our fighting strength
Hail Central Eagles, Fight on, Fight on, to victory.

Robert E. Stepp '40

Schnell
FLORAL CO.



"The Finest in Flowers and Gifts"

Ambassador Cards

Your Personal Envoy of Good Taste

Bud Schnell

Open 8 a.m.-5 p.m. Mon.-Sat.

South Side of Square

816-248-2141

CENTRAL METHODIST COLLEGE "C" CLUB VARSITY LETTER WINNERS



CENTRAL METHODIST COLLEGE FOOTBALL SCHEDULE 1979

DATE	OPPONENT	PLACE	TIME
Sept. 8	Benedictine College	Away	7:30 p.m.
Sept. 15			
Sept. 22	Culver-Stockton College	Home	1:30 p.m.
Sept. 29	Ottawa University	Away	1:30 p.m.
Oct. 6	Baker University	Away	7:30 p.m.
Oct. 13	Missouri Valley (Homecoming)	Home	2:00 p.m.
Oct. 20	William Jewell College	Home	1:30 p.m.
Oct. 27	Graceland College	Away	1:30 p.m.
Nov. 3	Univ.-Missori-Rolla	Away	1:30 p.m.
Nov. 10	Tarkio College	Home	1:30 p.m.